

THE LEGACY

NEWS from THE M.S. HERSHEY FOUNDATION | FALL/WINTER 2015 | ISSUE 21

Hershey Halloween Family Fun

THE HERSHEY STORY

BLACK CAT ALLEY

October 17, 18, 24, 25, 31 & November 1
11 a.m. to 3 p.m.

Kids, wear your costume and follow the black cat to Halloween fun! Use vintage Hershey advertising art to create your own mini Halloween character to use as a pin or decoration, and make a spiderweb, too. Plus, get a head start on your trick or treating with some Hershey's treats!

\$5 per child
Adults may accompany children at no charge.



PUMPKIN GLOW

October 23, 24, 30, 31
6 to 9 p.m.

Kids 12 and under are invited to bring flashlights and come in costume to trick-or-treat throughout the Gardens. Enjoy more than 150 carved, illuminated pumpkins along our path, watch pumpkin carving demonstrations and listen to storytime with the scarecrows. **Included in admission; members are free!**



New! Buy tickets online at HersheyGardens.org!

Milton Hershey's Passport Donated to the Archives

Hershey Community Archives recently acquired a passport that belonged to Milton Hershey. This passport documented his travel throughout Western Europe in 1924. Bob Pugliese, the nephew of Catharine Oslansky Pugliese, donated the passport to the Archives.

Beginning in 1932, Mrs. Oslansky Pugliese worked as a nurse for Mr. Hershey. In an oral history interview with the Archives, she described



Milton Hershey's Passport, 1924

“She describes him as a humble and amusingly mischievous individual.”



Archivist Pam Whitenack receives Mr. Hershey's passport from Bob Pugliese, nephew of Catharine Oslansky Pugliese

Mr. Hershey as “the most delightful patient” she ever had and recounts traveling with him throughout the Central Pennsylvania countryside.

“Mr. Hershey's passport is a special acquisition for the Archives,” said Pam Whitenack, director of the Archives. “It is rare to acquire an

item that Mr. Hershey personally used.”

In addition to the passport, Mr. Pugliese donated recipes his aunt collected from family members and chefs at the Hershey Country Club and The Hotel Hershey, as well as photographs of Mr. Hershey. One photograph features Oslansky Pugliese

walking with Mr. Hershey and offering him assistance.

“The photograph illustrates the close relationship, which she affectionately recalls in her

oral history interview, between Mrs. Pugliese and Mr. Hershey,” said Whitenack. “She describes him as

a humble and amusingly mischievous individual. It is evident they enjoyed one another's company very much.”



Mr. Hershey and his nurse Catharine Oslansky Pugliese, 1942

Catharine Oslansky Pugliese's oral history interview is available online at: media.hersheyarchives.org.

MILTON & CATHERINE HERSHEY CONSERVATORY

AT HERSHEY GARDENS

NEW BUTTERFLY ATRIUM TO HIGHLIGHT A VARIETY OF SPECIES

After more than two years of planning, construction is well underway for the new Milton & Catherine Hershey Conservatory at Hershey Gardens.

The new 16,000-square-foot structure will feature an indoor Educational & Horticultural Wing, a Butterfly Atrium and a Welcome Pavilion, as well as an overlook and a terrace.

“The construction phase has been exciting,” said Don Papsen, executive director of The M.S. Hershey Foundation. “It's great to watch it finally come to life.”



Grand opening is scheduled for summer 2016.

“Guests are most curious about the new Butterfly Atrium,” said Dan Babbitt, associate director. “I happily tell them it will be like travelling the world without leaving Hershey.”

“It will be a year-round tropical adventure. The 2,500-square-foot live exhibit will showcase butterflies and lush plants from around the globe.”

“Visitors will see over 500 native and exotic butterflies,” said Babbitt. “We plan to showcase 40 to 60 species at a time, and will rotate them every week.”

“Butterflies and moths of every size and color will be fluttering around this tropical environment, from the familiar monarch to the striking blue morpho,” said Babbitt. “Visitors will discover something new with each visit.”



Shipping Crate from World War II Relief Efforts Acquired by Museum

After the end of World War II, life for the millions of people living in war-torn areas was slow to return to normal. Infrastructure, such as roads and sanitation, was destroyed. Farm lands, obliterated by the war, had become battlefields. Most people living in Europe needed assistance with basic necessities such as food, clothing, shelter and medical care.

The United Nations Relief and Rehabilitation Administration (UNRRA) was created in 1943 by 44 countries, led by the United States, to provide assistance and improve conditions for the victims of war. Additionally, the U. S. Quartermaster General, part of the War Department, and civilian service organizations, such as the Red Cross, assisted with relief efforts.

A small part of those relief efforts included distribution of Hershey's chocolate bars in Berlin, Germany. For one woman, Emmi Polenski, it was a special treat—so special that she saved the wooden shipping crate the bars came in for more than 65 years. Recently,



This wooden shipping crate contained Hershey's chocolate bars for German war victims

Emmi's granddaughter, Sarah, contacted The Hershey Story about the crate.

"She told us her grandmother's story and wanted to know if the museum was interested in acquiring the crate," said Valerie Seiber, collections manager at The Hershey Story. "The Polenski family wanted to see that the crate was returned 'home.'"

"Of course we were very excited," Seiber said. "I have never seen one and I doubt we will ever be offered another one."

The museum staff is researching how the crate traveled to Germany. "Hershey Community Archives' records do not contain any clues as to who ordered the chocolate bars for the relief effort," said Seiber. "We hope archival records held at the United Nations in New York and at the National Archives in Washington, D.C. will provide information about the crate's provenance."



Emmi Polenski with her sons, Uwe and Jörg, c. 1946

Hershey Community Archives Newest Exhibit: Waste Not, Want Not: Hershey Means More than Just Chocolate

Located in the Grand Lobby of The Hershey Story, the Archives' exhibit changes three times a year and is free to visitors.

Milton Hershey believed in being a good steward of all resources. Instead of creating waste, he sought ways to use chocolate by-products in making new products for sale.

When the Hershey Chocolate factory first opened in 1905, thousands of gallons of fresh milk were used each day to produce Hershey's Milk Chocolate. However, the milk had to be skimmed before being added. By 1913, the need for skimmed milk led Milton Hershey to purchase a creamery in Lebanon, PA to process the milk needed for his milk chocolate. The creamery also bottled milk and cream for retail sales. In 1929, Hershey built a second creamery in town, close to Hershey Park. This "model dairy" bottled milk and cream and produced a variety of dairy products, including butter, cottage cheese and ice cream.



Hershey Estates Dairy made daily home deliveries of freshly bottled milk, c. 1960-1971

Likewise, Hershey's cocoa butter soap was developed in 1936 as a way of using the surplus

million pounds of cocoa butter created by the chocolate factory each year. Hershey developed a variety of soaps including Hershey's Tar Soap (for hair), Hershey's Mechanic's Soap, Hershey's Shaving Soap, Hershey's Cocoa Butter Toilet Soap and Hershey's Soap Granules. The soaps were distributed throughout the mid-Atlantic region.

The exhibit uses labels, photographs, and packaging to tell this fascinating story. It is open through December 2015.



Hershey's Cocoa Butter Soap display box, 1938

A Small Piece of the Past: Relic Hunting in the 1800s

An excerpt from the Curator's Corner Blog at HersheyStory.org

Each month, The Hershey Story's curators proudly publish an article on a newly-acquired artifact or story behind an object from the collection on their blog, "Curator's Corner" found at HersheyStory.org.

August's blog, "A Small Piece of the Past: Relic Hunting and Souvenir Collecting in the 1800s," featured highlights from 19th century relics and souvenirs in the museum's collection.

Here is an excerpt from the blog, written by Collections Assistant Lauren Ciriac Wenger...

The 1800s was a time of incredible development, expansion, and change in America. Important historic events occurred during this century—the Library of Congress was established, the Civil War was fought, the Statue of Liberty was gifted to the United States by France, and Yellowstone, the first National Park, was signed into law by Ulysses S. Grant. It was also a time of national exploration and expansion, including the Louisiana Purchase, the Lewis and Clark Expedition, the creation of the National Road, and building of the transcontinental railroad system. There were celebrations of culture



George Danner collected relics and souvenirs in the 1800s. Photo dated 1870-1890.

and innovation, such as the World's Fairs in New York, Philadelphia, and Chicago. National pride boomed. Along with this pride and interest came a desire to collect things as a way to keep the past alive, learn more about the surrounding world, and feel connected to the nation's captivating history and environment. The things people collected tended to be pieces of larger structures, objects or natural features that were associated with important places, people or events. Not only did they collect natural specimens such as rocks and sand as mementos from places they visited—they took actual pieces of buildings, statues, and even garments or other objects! These types of items are referred to as relics. The collector carefully labeled each item with information explaining its origins, and displayed the items in their home or kept them neatly tucked away in a container.

Some collectors made their displays open to the public in order to share their knowledge, even opening small "museums" of their own. In fact, the original owner of one of The Hershey Story's founding collections, George Danner, did just that. Danner collected Pennsylvania German items, as well as "curiosities." One

anecdote says that his initial interest in collecting began after he combed the Gettysburg battlefield for relics of the war. He enjoyed showing people his collection and explaining the objects' histories. Most of the objects classified as relics and souvenirs in The Hershey Story's collection come from Danner's collection.

Many people collected samples of natural objects from the environment such as rocks, flowers or sand, as mementos of places they traveled - especially if the natural object itself was famous.

The Charter Oak of Hartford, Connecticut was a large white oak tree. If you've ever seen the Connecticut state quarter before, you may have noticed an image of the tree on one side. According to legend, it got its name because it was used to hide the Charter of 1662, which

outlined the governance of Connecticut, from Sir Edmund Andros, an English colonial administrator who sought to take control of the colony. In 1856, the Charter Oak fell during a severe storm. Even prior to this event, people had taken pieces of the tree as souvenirs. After the storm, people came in droves to collect fragments. Additionally, many things have been made from salvaged pieces of the oak, from furniture to chess sets to cufflinks.

Read more at HersheyStory.org, under Museum Exhibits, Curators Corner.



This bottle is filled with water from the Dead Sea. According to its paper label, it was filled by Charles Huffnagle on Wednesday, February 3, 1847.



Civil War artifacts, including an assemblage of Gettysburg battlefield relics, a brick from Appomattox and a goblet made of wood from the famous Peach Orchard

The Hershey Story to Lend Rare Stove to Milwaukee Art Museum

A ten-plate, cast-iron stove manufactured at the Elizabeth Furnace located in Lancaster County, PA has been loaned to the Milwaukee Art Museum for an upcoming exhibition, *The Art of the Carver in Eighteenth-Century America*. In addition to the stove, the exhibition features highly ornamental furniture forms, ironwork and interior architecture. It runs October 2015 through November 2017.

Henry William Stiegel, a German immigrant, was once an ironmaster at the furnace, which he named after his wife. Stiegel was also known for producing European-quality glassware in the American colonies at the American Flint Glass Manufactory near Manheim, PA and founding the town in 1762.



This rare 1769 Stiegel stove was purchased by Milton Hershey in 1935, as part of the museum's George H. Danner collection.

Prior to traveling to Milwaukee, Wisconsin, the stove was sent to a conservator's studio for treatment. "There was active corrosion and prior treatments had become unstable," said Collections Manager, Valerie Seiber. "Additionally, the conservator cleaned all the component parts of the stove before applying a protective coating of wax to inhibit further corrosion."

While individual side plates cast at Elizabeth Furnace are numerous, a complete stove is rare. The front plate of the 1769 stove portrays the story of "The Dog and Its Reflection," one of Aesop's fables. The stove is part of The Hershey Story's George H. Danner collection.

Thank You, “Past Master” Volunteers

Again this summer, youth ages 12 to 15 provided helpful assistance to guests at The Hershey Story. Among various other duties, they helped guests learn the chocolate-making process, assisted camp groups and Thrilling Thursdays programs. They also provided fun, daily activities in the special exhibit “Chocolate Workers Wanted,” such as making chocolate-themed bookmarks, hand-wrapping Hershey’s Kisses and sorting on a conveyor belt.

The Past Masters made the museum a much livelier place this summer; we thank them for their time!

Summer 2015 Past Masters:

Gia Boughter	Anna Hession
Julia Briselli	Alyson Krell
Carly Carrasco	Elena Lam
Jack Clark	Kathy Li
Katherine Clark	Carli Little
Grady Cole	Aadi Mongia
Aniika Craddock	Emma Murphy
Lynn Dang	Ryan Murphy
Olivia Dreon	Tim Nevil
Malia Fellenbaum	Delainey Olinger
William Field	Graham Rode
Eirinn Flanagan	Dy’Mond Simmons-Settles
Matthew Garman	Nidhi Singh
Zac Gazzio	Katie Sottile
William Grice	Moxie Thompson
Liam Hamilton	Tyler Via
Luke Hamilton	Pierce Wagler
Annalee Hassler	Eamonn Wrightstone



Past Master Nidhi Singh helps young guests with conveyor belt activity.

THE
HERSHEY
STORY
THE MUSEUM ON
CHOCOLATE AVENUE

homeschool day

Wednesday, October 21, 2015
9 a.m. - 1 p.m.

“PAST TIME”
ENTERTAINMENT

Join us for a day of discovery as students
explore life in the early 1900s.



Learn more and register online at HersheyStory.org, under “Students & Teachers”, then “Homeschool.” Participants must register by October 19; pre-payment is required. Space is limited. Register early!

Love Chocolate?

Don’t Miss the “Chocolate Blab” Blog!

All chocolate, all the time! Don’t miss the Chocolate Blab, written by Chocolate Lab manager and chocolatier Kyle Nagurny. This light-hearted, educational blog features unique chocolate creations with step-by-step recipes.

A July blog entry featured the perfect summer chocolate creation: a chocolate-strawberry trifle in a flower pot...

Although trifles are often associated with the holidays, I thought I’d try a new recipe now in order to take advantage of the current abundance of fresh strawberries.

I didn’t set out to make a trifle in a flower pot but had to think fast when I realized that my trifle dish was missing (and it’s difficult to find a trifle dish in stores this time of year). Short on time, I decided a flower pot would be a perfect alternative and tie nicely to the summer season. Enter Chocolate – Strawberry Trifle (aka Flower Pot Trifle).



Strawberry Trifle in a Flower Pot

The flower pot I used for the recipe measures 7 inches tall and 8 inches across the top. The ingredients fit perfectly into this size pot, making a nice presentation brimming with fresh strawberries.

Of course, you can use a trifle dish of similar size if you like but where’s the fun in that?

At the risk of insulting anyone’s good judgment, I’ll tell you to use a clean, new flower pot and line it with heavy duty aluminum foil prior to filling. The reason relative to cleanliness for using a new pot and lining it with foil should be obvious but there’s also another angle to consider. Many pots are not fire-glazed and as a result they are porous. Although I haven’t tested a trifle in an unglazed clay pot, I’ll venture a guess that this type of pot will act like a sponge, drawing precious liquid from the trifle, leaving it dry.

This creation turned out perfect – and perfect for summer!

Chocolate Blab from the **Chocolate Lab**
AT THE HERSHEY STORY

HERSHEY STORY HAPPENINGS

Little Elves Workshop

November 14, 15, 21, 22, 27, 28, 29
December 5, 6, 12, 13, 19, 20, 26-31, January 1
11 a.m. to 3 p.m.



Kids, have some holiday fun as you journey through the “Little Elves Workshop!” Use chocolate clay, icing and ribbon to fashion a unique ornament to use as a gift or a keepsake. Try out some vintage toys and snap a unique holiday photo opportunity against a snowy Hershey scene. \$5 per ornament; free for museum family memberships

Snowball Saturdays

AT THE HERSHEY STORY

December 5, 12 & 19
10 a.m. to 2 p.m.

Friendly indoor snowball fights are the centerpiece of this holiday event! In addition, kids can visit with Coco the Bear and our own friendly snowman. Winter story times are also included. Chocolate Lab participants can make an edible snowball in “Marshmallow Mischief” classes, offered only on Snowball Saturdays. Chocolate Lab classes require ticket purchase; other activities are free. Check HersheyStory.org for a detailed schedule.



Rock Around the Clock

Thursday, December 31
11 a.m. to 3 p.m.

Celebrate the New Year throughout the day as you “Rock Around the Clock”

on Thursday, December 31. Kids can make some noise with the Hershey’s product characters and “bubble-wrap stomps” at 11 a.m., 1 and 3 p.m. Between stomps, groove through five decades of party music with DJ Mike DeAcosta of Spectra Sound. Activities take place in the Grand Lobby and patio (weather permitting). Free.

New Year’s Scavenger Hunt

January 1 - 3
9 a.m. to 5 p.m.

Search the museum for signs of the New Year with a fun-filled scavenger hunt, complete with a sweet reward. Free with Museum Experience admission; free for members.



Scout Workshops at The Hershey Story

The following workshops scheduled for the 2015/2016 school year include all the steps necessary to earn each badge. Please visit the “Events and Programs” tab at HersheyStory.org for more information and to register.

Saturday, October 10, 2015

Boy Scout Indian Lore Merit Badge



Saturday, March 12, 2016

Brownie Scout Senses Badge

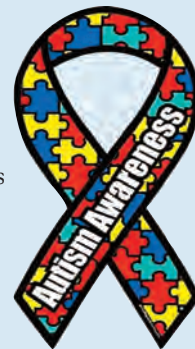


Saturday, April 16, 2016

Junior Girl Scout Playing the Past Badge

Sensory Friendly Resources

Pre-visit stories are available under the “Info & Hours” tab at Hershey Story.org. These stories are designed for those with sensory related challenges and anyone who would benefit from seeing pictures of what to expect during a museum visit. The museum also offers special Sensory Friendly Evenings on various dates throughout the year; check the HersheyStory.org event calendar.



Hooray for Halloween and the Holidays in the Chocolate Lab



Chocolate by Design

Experience delicious, hands-on fun this fall and winter in the Chocolate Lab at The Hershey Story! Guests can customize their own take-home chocolate treat while discovering the origin of cacao pods and how they are transformed into the world’s most popular confection.

The Chocolate Lab offers a variety of classes about chocolate, including “Build a Bar,” “Chocolate by Design,” “Planet



Candy Cane Bark



Let It Snow Chocolate

“Oak Leaves and Acorns.”

Holiday classes will be as jolly as Santa himself! Visitors can enroll in a variety of classes sure to put everyone in the holiday spirit. Featured

Chocolate” and the newest addition, “Be a Chocolate Worker.”

Halloween promises to be eerily delicious with “Chocolate Cobweb Creations” and “Build a Batty Bar” classes, as well as traditional fall favorites such as



Marshmallow Mischief

classes include “Make a Very Merry Bar,” “Candy Cane Bark” and “Create a Kris Kringle” as well as “Marshmallow Mischief” and



Chocolate Cobweb Creations

“Let It Snow Chocolate” classes, offered only on Snowball Saturdays.

Forty-five minute classes are scheduled throughout the day; check HersheyStory.org for a full schedule. Children must be 4 years or older to enter the Lab.

HERSHEY THEATRE
15/16 BROADWAY SERIES
 Presenting Sponsor **Capital BLUE**

For tickets, please call the Hershey Theatre Box Office at 717.534.3405 or visit HersheyTheatre.com

Matilda the Musical

November 10 - 15, 2015

Based on the beloved novel by Roald Dahl, *Matilda* continues to thrill soldout audiences of all ages on Broadway and in London's West End. *The Wall Street Journal* says, "The makers of *Matilda* have done the impossible – triumphantly! It is smart, sweet, zany and stupendous fun." Winner of 50 international awards, including four Tony Awards®, *Matilda the Musical* is the story of an extraordinary girl who, armed with a vivid imagination and a sharp mind, dares to take a stand and change her own destiny.



Buddy: The Buddy Holly Story

January 19, 2016



Now in its 26th amazing year, the "World's Most Successful Rock 'n' Roll Musical" continues to thrill audiences around the world. Viewed by more than 22 million people worldwide, *Buddy* opened in London's West End in 1989, and has been seen on Broadway, throughout Canada, the U.S., Australia, New Zealand, Japan, Germany, Scandinavia, South Africa, the Netherlands and Singapore; winning numerous awards along the way. *Buddy* tells the story of Buddy Holly through his short yet spectacular career, and features the classic songs, "That'll Be The Day," "Not Fade Away," "Oh Boy," Ritchie Valens' "La Bamba," The Big Bopper's "Chantilly Lace" and many more! This show is just Peggy Sue-perb!

transported back to your childhood as you rediscover some of Rodgers and Hammerstein's most beloved songs, including "In My Own Little Corner," "Impossible/It's Possible" and "Ten Minutes Ago," in this hilarious and romantic Broadway experience for anyone who's ever had a wish, a dream... or a really great pair of shoes.

Blue Man Group

March 15 - 17, 2016

Blue Man Group is best known for their wildly popular theatrical shows and concerts which combine music, comedy and multimedia theatrics to produce a totally unique form of entertainment.



Rudolph the Red-Nosed Reindeer: The Musical

December 8 & 9, 2015

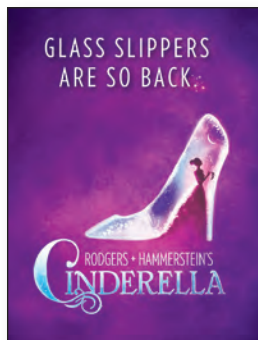
The beloved TV classic *Rudolph the Red-Nosed Reindeer* soars off the screen and onto the stage this holiday season. See all of your favorite characters as they come to life in *Rudolph the Red-Nosed Reindeer: The Musical*.



Cinderella

January 26 - 31, 2016

Rodgers and Hammerstein's *Cinderella* is the Tony Award®-winning Broadway musical from the creators of *The Sound of Music* and *South Pacific* that's delighting audiences with its contemporary take on the classic tale. This lush production features an incredible orchestra, jaw-dropping transformations and all the moments you love—the pumpkin, the glass slipper, the masked ball and more—plus some surprising new twists! Be



Ragtime the Musical

April 26 - May 1, 2016

At the dawn of a new century, everything is changing...and anything is possible. *Ragtime* returns to the road in an all-new touring production. The stories of an upper-class wife, a determined Jewish immigrant and a daring young Harlem musician unfold - set in turn-of-the-century New York - all three united by their desire and belief in a brighter tomorrow. Their compelling stories are set to theater's richest and most glorious Tony Award®-winning score by Stephen Flaherty and Lynn Ahrens.



classic films: A Double-Feature at Hershey Theatre! Saturday, October 24, 2015



Ghostbusters at 7 p.m.

After the members of a team of scientists (Harold Ramis, Dan Aykroyd and Bill Murray) lose their cushy positions at a university in New York City, they decide to become "ghostbusters" to wage a high-tech battle with the supernatural for money. They stumble upon a gateway to another dimension, a doorway that will release evil upon the city. The Ghostbusters must now save New York from complete destruction. Rated PG.

The Rocky Horror Picture Show at 11:59 p.m.

The ultimate fan participation film! This bawdy film tells the far-fetched tale of a young couple coming to a haunted castle on a rainy night. Prop bags will be available for \$6, starting at 11 p.m. No outside props allowed. Rated R.



General admission tickets are available at the Box Office for \$8 per film.

Hershey Theatre's Performing Arts Through the Years: The 1970s - An Era of Change

This is the third article in a series to appear in The Legacy. Each article highlights the evolution of performing arts at Hershey Theatre.

The 1960s ended with diminished popularity for Hershey Theatre, with vandalism and mischief brought about by teens dropped off at the Theatre to watch movies. In 1969, the Theatre discontinued showing movies as part of their regular fare.

The future of the Theatre looked bleak by 1970. The costs associated with maintaining a historic theater were significant. While the community valued the Theatre and the cultural programming that it offered, Hershey Estates couldn't continue to underwrite the costs of running and managing such a costly institution. Wanting to preserve Milton Hershey's legacy, in 1970 Hershey Estates transferred ownership of the Theatre to The M.S. Hershey Foundation. The Foundation, with its charge to support cultural and educational opportunities in Derry Township, was committed to bringing the arts to Central Pennsylvania.



Victor Borge performed almost every year at Hershey Theatre during the 1970s. Central Pennsylvania, including the London

The Theatre began building a program that offered a wide variety of musical and theatrical programs. The Great Artists Series, which Hershey Theatre presented in partnership with Lebanon Valley College and Elizabethtown College, continued to bring world-renowned classical attractions to



Marcel Marceau drew crowds during his performances at Hershey Theatre.

Philharmonic, Duke Ellington, violinist Yehudi Menuhin, Berlin Concert Choir and Orchestra, pianists Lorin Hollander and Andre Watts, Moscow State Symphony Orchestra, Dave Brubeck, Norman Luboff Choir, guitarists The Romeros, Marcel Marceau and the Prague Chamber Orchestra, just to name a few.

Stars who took to the stage included Robert Cummings, Mamie Van Doren, Louis Jourdan, Stubby Kaye, Ricardo Montalban, Myrna Loy, Edward Mulhare, Patsy Kelly, Howard Keel, Ken Berry, Dana Andrews, Monte Markham, Howard Duff, Cyril Ritchard, Carolyn Jones, Rosemary Clooney and Rose Marie. A favorite of this era was Broadway star John Raitt (father of Bonnie Raitt), who visited six times. Hershey also continued its tradition of being a launch stage for new touring companies of Broadway shows. In March 1975,

the show, *Give'Em Hell, Harry*, starring James Whitmore, was built in Hershey for their road tour.

The Theatre's role as a movie house was also revived. In 1979, Hershey Theatre introduced the Classic Film Series, which brought back vintage films to the Theatre once each month. By the end of the decade, Hershey Theatre had reclaimed its position as a center for culture and the performing arts.

In the next edition of *The Legacy*, read about how Hershey Theatre rose in prominence on the touring Broadway circuit during the 1980s and 90s.



Program for the national touring company performance of "1776."



Some of nation's most successful performers, including Louis Jourdan, Betty Garrett and Larry Parks performed on the Hershey stage during the 1970s.

HERSHEY THEATRE

Spotlight tour

Get behind the scenes

From basement to balcony, experience the opulence and intrigue of "Mr. Hershey's Show Palace" during this 90 minute walking tour.

Fridays at 11 a.m.

Adults: \$8, Juniors (3 – 12): \$6

Tours are subject to cancellation due to shows and events.

Please call 717.533.6299 to inquire.

Private 90-minute tours available for groups.

Get your tickets now!

beyond the footlights
a celebration cabaret

featuring stars from the Hershey Theatre Apollo Awards



Saturday, January 23, 2016

6:30 p.m.

Tickets: \$75

Auditorium seating*: \$10 (for show only)

On sale now at the Box Office

or by calling 717.534.3405

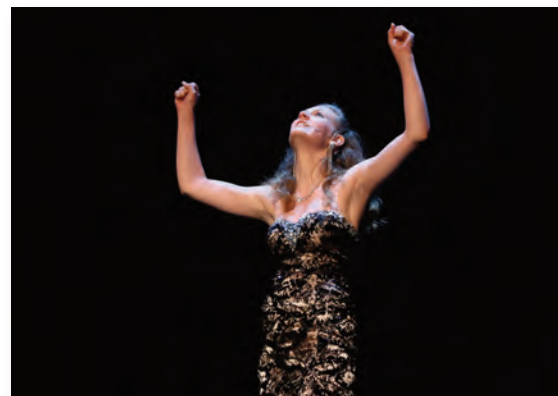
*These seats are located behind the performers

The Spotlight Shines on Student Talent at the Seventh Annual Hershey Theatre Apollo Awards

Backstage was bursting with excitement on Sunday, May 17 as the Hershey Theatre Apollo Awards filled the house with students, friends and supporters of the annual event. Featuring emcee and host Dennis Owens, the live show featured numerous performances from nominated high school students.



Outstanding Lead Actor in a Musical, Kodiak Thompson



Outstanding Lead Actress in a Musical, Kelley Hertzler

The Hershey Theatre Apollo Award scholarship program recognizes excellence in local high school theater productions and applauds talented students in Cumberland, Dauphin, Lebanon and Perry counties and Elizabethtown area high schools.

Four students received an exciting three-day theater experience to New York City in June as recipients of their award categories. Participating students included Kodiak Thompson from Hershey High School and Kelley Hertzler from Boiling Springs High School, named Outstanding Actor and Actress in a Musical, respectively, and Carson Kahoe from Central Dauphin High School and Paxton Zeis from Hershey High School,

named Outstanding Actor and Actress in a Play, respectively.

During their stay, the group participated in a drama workshop with veteran actor Timothy Shew and several "question and answer" sessions with Broadway professionals, including Hershey High School graduate Will Curry, who is now a member of the orchestra of *Les Miserables*. The students also attended two Broadway musicals, enjoyed an off-Broadway play and toured Radio City Music Hall and Brooklyn's Barclays Center.

The 2016 Hershey Theatre Apollo Awards is scheduled for Sunday, May 22, 2016. Tickets will go on sale on January 4, 2016.

CONGRATULATIONS TO THE 2015 HERSHEY THEATRE APOLLO AWARDS RECIPIENTS



Outstanding Musical nominee, Susquehanna Township High School, performs a number from *Aida*.

Outstanding Featured Performer in a Play

Melissa Kline, *Cat on a Hot Tin Roof*, Central Dauphin High School

Outstanding Featured Performer in a Musical

Mary Keefe, *The Addams Family*, Susquenita High School

Outstanding Supporting Actress in a Play

Meredith Batzler, *Auntie Mame*, Camp Hill High School

Outstanding Supporting Actor in a Play

Ben Pazuchanics, *Cat on a Hot Tin Roof*, Central Dauphin High School

Outstanding Supporting Actress in a Musical

Melissa Kline, *Kiss Me, Kate*, Central Dauphin High School

Outstanding Supporting Actor in a Musical

Brian Soutner, *The 25th Annual Putnam County Spelling Bee*, Elizabethtown Area High School

Outstanding Student Playwright

Kathleen Hartwell, *Enlightened*, Bishop McDevitt High School

Outstanding Play

Central Dauphin High School, *Cat on a Hot Tin Roof* (Cast A)

Outstanding Student Orchestra

Hershey High School, *Crazy for You*

Outstanding Dance Number in a Musical

Bishop McDevitt High School, "Step in Time" from *Mary Poppins*

Outstanding Lead Actress in a Play

Paxton Zeis, *The Matchmaker*, Hershey High School

Outstanding Lead Actor in a Play

Carson Kahoe, *Cat on a Hot Tin Roof*, Central Dauphin High School

Outstanding Lead Actress in a Musical

Kelley Hertzler, *Funny Girl*, Boiling Springs High School

Outstanding Lead Actor in a Musical

Kodiak Thompson, *Crazy for You*, Hershey High School

Outstanding Musical

Hershey High School, *Crazy for You*



Hershey High School won a 2015 Hershey Theatre Apollo Award for Outstanding Musical for its production of *Crazy for You*.

Meet Harry Erdman, Milton Hershey's Horticulturist

Born in 1890, Harry L. Erdman, grew up in Lebanon, Pennsylvania. As a young man, his love of trees led to a job with the Davey Tree Company in Lebanon where he developed a broad range of horticultural skills. On November 9, 1928, Erdman began what would be a 29-year career with the town of Hershey, actually starting ten days early because his predecessor, Charles Schmidt, had left rather unexpectedly to start a new job.

The town of Hershey has always been known for its beautiful landscaping. As head of the Hershey Greenhouse and Nursery, Harry Erdman was responsible for all of Hershey's horticultural and landscape work. He oversaw the gardens and lawns in Hershey Park, those surrounding the Hershey Chocolate factory, other office buildings and all the public green spaces in town.

During the 1930s, Erdman took on several special projects that became part of Hershey's "great building campaign." He oversaw the construction of the four golf courses that opened between 1930 and 1934, including Hershey Country Club and the Hershey Parkview public course.

Erdman's job responsibilities included new plantings, ordering plants and supplies, overseeing private landscape work and making crew assignments. In the winter, he oversaw snow removal throughout the town and Milton Hershey School, as well as caring for any tree



Harry Erdman, director of the Hershey Rose Garden, introduces visitors to the gardens, 1956

damage caused by winter storms. As Harry Erdman noted in his 1955 oral history interview:

There [was] always something new cropping up. There never was a dull moment in any day. It kept you stepping, and there was always an interesting job to keep you busy. We never had to sit and watch a clock.

Most notably, Harry Erdman designed and constructed the Hershey Rose Garden, a 3 1/2 acre garden of roses, which opened in May 1937. Hershey Rose Garden was created after Milton Hershey was asked by the American Rose Society to donate one million dollars to establish a national rosarium in Washington DC. In response, Mr. Hershey decided to build his own rose garden in Hershey.

The immediate success of the rose garden led to its expansion over the next several years and Erdman oversaw

the gardens enlargement to almost 23 acres and its development into a full botanical garden.

Through his work on the Hershey Rose Garden, Erdman developed expertise with roses, becoming known as a respected rosarian. He served as president of the American Rose Society and was awarded the Society's medal for outstanding service to the Society. His skills were recognized as well when President Eisenhower asked him to design the Rose Garden at the Eisenhower Museum in Abilene, Kansas and also do horticultural work at the President's farm at Gettysburg.

As the director of the Hershey Rose Garden, Erdman spent time with many Milton Hershey School boys who worked in the Gardens during the summer months. His influence on the boys was often long-lasting.

Ken Hatt, a retired Hershey Entertainment & Resorts Company executive and Milton Hershey School alumnus, remembered his time as a student working there, pulling weeds in the Garden. In later years, Ken and his wife became friends



The new Milton & Catherine Hershey Conservatory will feature a new entrance to the Gardens. Ken Hatt generously sponsored the new entrance, with a request that it be named "In honor of Harry Erdman."

with Harry Erdman. "Harry kept me interested in flowers," Hatt remembered. "He originally designed our landscaping after we built our home in 1959." When Ken updated his landscaping in later years to include a 60-foot waterfall and pond, he credited the training he received from Harry Erdman and working in the Gardens to motivate him to undertake the project.



Ken Hatt enjoys his backyard garden, inspired by the time he worked for Harry Erdman in Hershey Gardens, 2006

Erdman's Kindness Results in 1951 Rose Garden Wedding

Dick and Carolyn Herritt met in 1950 when they were students at Nyack College in upstate New York. They quickly fell in love, and Dick soon proposed to Carolyn. Carolyn's parents were houseparents at Milton Hershey School and suggested that the young couple have their wedding in Hershey.

Carolyn's mom shared the news of her daughter's upcoming marriage with Harry Erdman, who was director of the Hershey Greenhouse and Nursery, as well as the Hershey Rose Garden. He kindly suggested that the young couple might like to get married in the Rose Garden.

Dick and Carolyn quickly agreed and plans were made for a June



Although Erdman had never met the bride and groom, he offered the Hershey Rose Garden for their wedding ceremony, 1951

9, 1951 wedding. The couple had very little money to spend on a wedding. The ceremony took place in the garden, and the cake and punch reception was held at the Milton Hershey School student home Broad Acres, located just south of Airport Road (today Hersheypark Drive), where Carolyn's parents served as houseparents. The students were on vacation from school that week, so the empty student home was available for the modest wedding reception.

Harry Erdman graciously provided bouquets of roses for the wedding party and the reception. "We didn't know Mr. Erdman, but were very thankful of his generous offer to use the Hershey Rose Garden," said Dick Herritt.

Choosing an Ornamental Grass for Your Garden

Large Variety of Textures, Colors and Sizes Available

by Brooke Umberger, Horticulture Coordinator, Hershey Gardens

Fall is still a great time of year to be in the garden, whether it's to plant something new, cut back your perennials or just take in the colorful hues of the fall landscape.

A great addition to any home garden is ornamental grasses. Grasses come in all heights and colors and can add interest and texture. They're very easy to care for, only needing to be cut back in late fall or early spring. A grass garden could be added as a new themed garden or one or two specimen grasses can be added to an already manicured landscape. Grasses thrive during fall due to their tassels, which add even more color to the garden.



Giant Reed Grass

Giant reed grass *Arundo donax* is certainly a show stopping grass. During spring and summer, it looks like stalks of corn growing in the garden, continuing to grow until fall when it reaches upwards of 18 feet. The tassel on the grass is a deep red/purple and soft to the touch.

Giant reed is found commonly in water gardens but also does well in a drier landscape. It performs well in almost any soil and is a smart choice for soil erosion control. This grass is a great source for decorating the exterior landscape as well. They can double as corn stalks for decorating lamp posts and other spaces around your home. Dried tassels also look great in flower arrangements.

Blue fescue *Festuca glauca* is an ideal grass to add to borders and containers. It is relatively small, only growing one foot tall and wide, but, as the name suggests, it adds a nice blue hue to the garden. This grass, which tassels in June



Blue Fescue

and July, serves as a great low-lying groundcover in between rocks and is tolerant of drought and deer. While it can handle part shade, it performs best in full sun. Blue fescue is easy to care for, only requiring dividing every few years. It can even provide evergreen color throughout winter if it is a milder season.

Northern sea oats *Chasmanthium latifolium* is a fan favorite grass in its native landscape. It begins tasseling in August and September and keeps its unique tassel throughout the fall. Northern sea oats grows four feet tall and spreads



Northern Sea Oats

about two feet wide. It does well in many kinds of soils and can handle shade to sun, as well as moist to dry conditions. Named for its tassels forming flat seed heads similar to that of oats, the grass is showy in late summer as it changes from newly emerged green seeds to bronze dried seeds. This grass is great for adorning any landscape, accenting indoor floral pieces and even keeps long enough to add another element to winter décor. Think of adding this grass choice to a native garden, shade garden or water garden.

Zebra grass *Miscanthus sinensis* is attractive not only for its golden or burgundy tassels, but also for its showy foliage. The green blades are striped with yellow, giving contrasting texture to many



Zebra Grass

other perennials found in the garden. The tassel on this grass is long lived, sometimes beginning as early as August and lasting through February. Zebra grass is great for the back of the garden as it can grow to six feet in height and up to four feet wide. This plant provides nice color in the winter landscape and should only be cut back in late winter or early spring to help protect the crown from colder temperatures. Zebra grass does well in almost any soil and can grow in full shade or sun. If grown in shade, it may need staking because it tends to flop over in fully shaded conditions. This grass is a great pick for any landscape, but does well planted in groups, meadows and naturalized water areas.

Switch grass *Panicum virgatum* is a grass native to North America, making it a great low-maintenance

choice for the home landscape. Switch grass can grow to five feet tall with a smaller width of



Switch Grass

only three feet. Because of its size, this grass does well in the back borders of the garden or in a single clump to highlight an area. The green foliage begins growing in spring and blooms a pink-burgundy tassel as early as July, lasting until late winter of the following year. While the tassel is thin, one clump of the grass creates a nice full appearance in the garden. The tassel also attracts birds to the garden because it provides a food source in winter. This grass will perform well in almost any soil or light conditions, but like most grasses, it performs best in full sun and moist, well-drained soil. Switch grass stems can also be used in the landscape for decorating or left in the garden for showy color. Either way, this native grass will perform well in almost any garden.

Consider planting a few ornamental grasses in your garden this fall. The tassels are festive for the season and the maintenance is low. Most grasses can grow in almost any area in the landscape. These perennials will provide texture and color throughout more than one season, as well as provide natural decoration. No matter which species of grass you choose, all ornamental grasses prolong the life of the garden into fall as a remembrance of warm summer days.

Don't miss the fall display of ornamental grasses at Hershey Gardens. Enjoy many varieties of these decorative and hardy plants, from short fescues to giant reed grasses.



Santa Schedules Stop at Hershey Gardens!



Santa's Secret Garden

December 4, 5, 11 & 12
4:30 – 6:30 p.m.



Children will be greeted by Santa's elves as they travel through a path of twinkling lights to discover Santa and his secret garden. Their enchanted journey includes a visit with Mr. and Mrs. Claus. Guests can enjoy carolers and entertainers along the path and children's hands-on activities. Kids can hunt and find their way through a winter wonderland of white lights, then meet Santa and receive a special gift to last the whole year.



Snacks and warm drinks will be available for sale, sponsored by Fishburn United Methodist Church. Santa's Secret Garden is included in admission; members are free!

Bonsai: Living Art of the Susquehanna Bonsai Clubs Exhibit

Friday, October 9 through Sunday, November 8;
during regular Gardens hours

Featuring dozens of bonsai trees in various shapes and sizes, this popular annual exhibit provides information on bonsai, what they are and how they are cultivated. The exhibit will be displayed in the Butterfly House. Included in admission; members are free!



See It Soon!

Exhibit Extended Through Saturday, October 31



Artist Shane Morgan sculpted this sea turtle using parts from a Volkswagen bus.



Ordinary materials transformed into extraordinary art!



Artist Jason Lyons created this mythical winged creature using various discarded metals.



Old lawn mower blades create an impressive wingspan on this bald eagle created by sculptor Scott Farmer.



Eli Weaber created this colorful caterpillar using metal from a former bridge at Lebanon Valley College.



63 West Chocolate Avenue
Hershey, PA 17033 | 717.298.2200
MSHersheyFoundation.org

The M.S. Hershey Foundation is a 501(c)(3) non-profit educational and cultural organization.



Funding for The Hershey Story is supported by a grant from the Pennsylvania Historical and Museum Commission, a state agency funded by the Commonwealth of Pennsylvania.

The M.S. Hershey Foundation Board of Managers

Richard C. Zilmer, President and Chairperson
Retired Lieutenant General, USMC

James M. Mead
Retired CEO, Capital BlueCross

Velma Redmond, Esq.
Retired Vice President, Pennsylvania American Water Company

Donald C. Papson
Executive Director, The M.S. Hershey Foundation



170 Hotel Road
Hershey, PA 17033
717.534.3492
HersheyGardens.org



63 W. Chocolate Avenue
Hershey, PA 17033
717.534.8939
HersheyStory.org



15 East Caracas Avenue
Hershey, PA 17033
717.534.3405
HersheyTheatre.com



63 W. Chocolate Avenue
Hershey, PA 17033
717.533.1777
HersheyArchives.org



Memberships make great gifts!



This holiday season, consider giving a membership to The Hershey Story, Hershey Gardens or Hershey Theatre Guild.

Call membership specialist Denise Frantz at 717.520.5581 for more information.

Need a Special Location for a Special Event? The Hershey Story Offers Unique (and Delicious) Rental Opportunities

Beauty, history – and delicious fun! The Hershey Story has all the right ingredients to make your special event perfect.

"We offer evening rentals for receptions, corporate parties, reunions - and everything in between," said Amy Bischof, director. "Our caterers offer amazing cocktails, a variety of dinner options and unique desserts. Plus, the guests can explore the Museum Experience, which is always a big hit."



"We also offer a variety of hands-on activities in the Chocolate Lab or flights of warm drinking chocolate from around the world at Tastings," said Bischof. "We're happy to customize an experience that's perfect for each group."

The Grand Lobby can accommodate up to 150 guests for a seated dinner and up to 250 for a cocktail party.

To learn more, please call 717.534.3343 or email lamorelli@HersheyStory.org.

New!



Kids, get ready to stir up some fun!

Tastings for Kids is here! The newest addition to The Hershey Story's Tastings gives young visitors the opportunity to create a warm drink in their favorite chocolate flavor. Kids whirl their choice of white, milk or dark chocolate, star-shaped lollipops in mugs of warm milk – soon ready for sipping.

Bring the whole family to Tastings, located in the museum's Grand Lobby, to experience warm drinking chocolate prepared using cocoa beans from around the world. From the complex flavors of Venezuelan cacao to the milky richness of chocolate from Java, immerse yourself in the sweet world that inspired Milton Hershey.



The Hershey Story Announces Annual History Contest

The Hershey Story's 15th annual History Contest will be open to entrants on November 1, 2015; the deadline is February 15, 2016. This contest encourages students to research and write about a historical topic that interests them - past winning topics have included the inventor of gummi bears, Dr. Seuss, origins of basketball, as well as more traditional topics, such as Abraham Lincoln and World War II.

The categories are non-fiction, fiction and poetry and the contest is open to fifth through eighth grade students in Adams, Cumberland, Dauphin, Lancaster, Lebanon, Perry and York counties.

For more information and to view last year's winning essays, visit the Students & Teachers section at HersheyStory.org.

Kids, write an essay, story or poem

Be creative

But be sure to check out the rules online

Don't forget about the science and health category!