

THE LEGACY

NEWS from THE M.S. HERSHEY FOUNDATION | SPRING/SUMMER 2026 | ISSUE 41

Come One, Come All!

The 1893 World's Fair is Coming to The Hershey Story Saturday, June 13 and Sunday, June 14 from 9 a.m. to 5 p.m.

The 1893 Chicago World's Fair was a cultural touchstone that still influences our world today. Many important figures like *The Wizard of Oz* author Frank Baum, social activist Helen Keller, and our own Milton Hershey attended and were greatly influenced by this historic event.

"The Chicago World's Fair is where Mr. Hershey saw and ordered his first two pieces of chocolate-making equipment and boldly declared that 'caramels are a fad, chocolate is permanent,'" said Elizabeth Lindsay, manager of education and public programs at The Hershey Story Museum.

On Saturday, June 13 and Sunday, June 14, The Hershey Story is proudly hosting a new event – *A Sweet Beginning: Milton Hershey at the 1893 World's Fair*. "Guests of all ages can immerse themselves in the energy, excitement and landscape of a historic World's Fair," said Lindsay.

What is a World's Fair? "World's Fairs were large international exhibitions that showcased new inventions, technologies, architecture and cultural achievements from around the world," said Lindsay. "They introduced groundbreaking innovation, while promoting global exchange, creativity and national progress."



Admission ticket to the fair. Multiple tickets were printed, some with different portraits and others with graphics for special days.

The 1893 Chicago World's Fair was a grand spectacle that drew in people globally. "The fair covered over 600 acres and had more than 200 buildings with architectural influences from all over the world," noted Lindsay. "Visitors were awed by the use of electricity, technological inventions such as the dishwasher, wonders such as the Ferris wheel and foods they had never tried before."

"The fair was focused around innovation and exposing visitors to new ideas," said Lindsay. "Milton Hershey saw many of these new concepts and used them as inspiration to create a new product and start a new business, as well as establish a town and a community unlike any other."

"On June 13 and 14, guests can discover these connections as they explore the museum through special innovation stations and activities," said Lindsay.



June 13 & 14, 2026 at The Hershey Story Museum

Starting outside on "the Midway," guests will be entertained by period music, stilt performers and a fun photo op. "Plus, they'll learn about some of the amusements on the Midway in Chicago and its influences on Hersheypark," said Lindsay. "The Fair's Midway also contained other features considered educational entertainment at the time, such as ethnographic villages. Although the focus of the 1893 World's Fair was to highlight human achievement and progress, it was also a complex cultural event undergirded by colonialism and racist ideas. This was evident not only on the Midway but also because the fair was named The Columbian Exposition to honor Columbus's arrival in the New World and Black Americans were largely excluded from participation," said Lindsay. "As guests experience the wonders the fair has to offer, there will also be interpretive areas where they



Cut glass torchère in the L. Straus and Sons exhibit at the fair. Milton Hershey bought the torchère in 1901, after seeing it at the Straus exhibit.

can learn more about the role cultural discrimination played in this historic event."

Inside, guests will learn how advancements in electricity, architectural designs and new inventions were changing the world through engaging and hands-on activities. "Plus, see models of early chocolate-making machinery, write to a friend using picturesque replica bar cards, listen to a phonograph, create your own Ferris wheel and view original souvenirs purchased at the fair," said Lindsay. "Witness period actors walk throughout the museum, listen closely and you might hear their excitement regarding the fair!"

At the Chocolate Lab, enjoy some of the classic treats exhibited at the fair such as the original Palmer House Hotel recipe for brownies.

"Guests can also try some of the then-viral orange cider that took the fair by storm and chocolate dipped caramel popcorn balls as an homage to Cracker Jack's 1893 debut," said Lindsay. "There will also be a 23-inch chocolate statue of Milton Hershey!" For some more sweets, an ice cream truck will be on site for guests to take a break and enjoy a cool treat while experiencing the awe of the fair.

Join us to experience this new, special event on Saturday, June 13 and Sunday, June 14 from 9 a.m. to 5 p.m. Activities are free with Museum Experience admission; free for members of The Hershey Story.



Souvenir glass from the 1893 World's Fair with a picture of the Administration Building.



Close up of the top of the torchère Milton Hershey purchased. It has fine, hand-cut details and contains over 1,200 pieces.

Final Months to See the Special Exhibit: From Hershey Industrial School to Hershey CEO: The Bill Dearden Story

Exhibit Closes September 7

Take a trip down memory lane as you explore Hershey history from the 1960s to the 1980s, when you visit The Hershey Story Museum's exhibit, From Hershey Industrial School to Hershey CEO: The Bill Dearden Story. William "Big Bill" Dearden was the first graduate of Hershey Industrial School (now Milton Hershey School) to fulfill Milton Hershey's dream that one of the boys from his school would someday run his chocolate company. Learn about Dearden's life and leadership, which led to significant shifts in Hershey's corporate operations, product development, improved sales, creation of a marketing department and the company's first television commercials.



Bill Dearden with Milton Hershey's portrait, 1979

Hershey was a late-comer to the advertising game. Their first U.S. commercials aired in 1969 and featured three products: Hershey's Milk Chocolate, Reese's Peanut Butter Cups and Hershey's Instant Cocoa Mix. "Watching and selecting old Hershey commercials for the exhibit was great fun," said Valerie Seiber, senior manager of historical collections and exhibitions. "There are so many iconic Hershey ads, it was hard to narrow down the final selections."

Fluctuating prices of cocoa beans and sugar forced Hershey to look for growth opportunities outside chocolate products. "Hershey began acquiring food-related companies, like pasta and coffee, as a means to diversify and build their portfolio," said Seiber. "Expanding to international markets provided access to new customers in Canada, Mexico, Brazil, Japan and the Philippines."

A variety of product packaging from the era is also displayed. Guests may recognize old favorites, such as Hershey's Special Dark and Reese's Pieces. Other products, such as Rally and Hershey's Frostin', struggled to find market share.

The exhibit runs through Labor Day, September 7, 2026. It is made possible with generous support from The William E. Dearden Foundation, Milton Hershey School and The Hershey Company.



Hershey Foods Corporation 1979 Annual Report showing various products and company acquisitions.



Hershey's Special Dark chocolate was introduced in 1971. Previous dark chocolate products were labeled as Not-So Sweet (1933-1937), Bittersweet (1937-1949) and Semi-Sweet (1949-1971).



This package of Hershey-ets was produced for the Canadian market, 1970-1986.



Package of Hershey's Kisses chocolates for the Mexican market, 1969

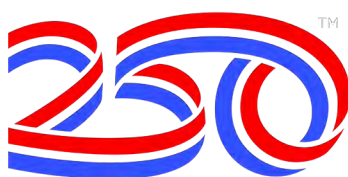
Celebrate Civic Season at The Hershey Story

This summer, The Hershey Story Museum invites young people and families to take part in Civic Season, a nationwide celebration of history, community and civic engagement from June 19 through July 4. Designed to amplify youth voices, Civic Season brings museums and historic sites together with young community members to create meaningful, hands-on experiences that connect the past to the future. This year is especially significant as the nation celebrates the 250th anniversary of America's founding.

The Hershey Story kicks off Civic Season on Saturday, June 20 from 3 to 5 p.m. with a free "Kickoff Party" for youth ages 11 to 18. Students are invited to test their knowledge with American history trivia, enjoy snacks, and participate in a special painting activity. Each work of art will feature a positive message or hope for the next 250 years of the country. These creations will be displayed for the public during the following weeks' events, offering a powerful glimpse into the perspectives of our local youth.

On Saturday, June 27 from 10 a.m. to 3 p.m., the Museum will host "Youth Take-

AMERICA



over Day," part of a national initiative that puts young leaders front and center. Visitors of all ages can enjoy interactive, youth-led programs that explore the legacy of Milton S. Hershey and his lasting impact on the community. The day highlights how the next generation can interpret and share history in fresh, engaging ways.

The celebration concludes on Saturday, July 4 from 10 a.m. to 3 p.m. with a day of reflection and creativity marking America's 250th anniversary. Guests can explore the Museum to learn more about Milton Hershey's story of innovation and perseverance, and participate in a hands-on craft activity that encourages thinking about the future through the lens of creativity and invention.

From youth-led programming to hands-on history and creative expression, Civic Season at The Hershey Story offers a unique opportunity to celebrate the past, engage with the



**Save the Dates
for Civic Season!**

Civic Season Kickoff Party

Saturday, June 20, 3 – 5 p.m.

For ages 11-18, no admission required

Youth Takeover Day

Saturday, June 27, 10 a.m. – 3 p.m.

All ages, free with museum admission

July 4th Celebration

Saturday, July 4, 10 a.m. – 3 p.m.

All ages, free with museum admission

Famous for Flavor: The History of Jolly Rancher

By Juliana Hart, Archives Assistant

While Jolly Rancher is known today for its whimsical fruit characters, the brand has its roots in the “Wild West.” Jolly Rancher was founded in Golden, Colorado in 1949 by Dorothy and Bill Harmsen. The company began as a soft ice cream shop. The Harmsens chose the name “Jolly Rancher” because they wanted their brand to have a Western theme and a hospitable tone. This atmosphere was often displayed in early advertisements.



Jolly Rancher advertisements, 1978

Despite the Harmsens’ efforts, the ice cream shop struggled in its early days. The family added chocolate candies — produced by a Denver candy maker — to their store’s lineup in the hopes that this would help the company during the winter months. The candies were a hit, and soon the Jolly Rancher brand had such success that the Harmsens opened additional shops in Colorado, Nebraska and Wyoming.



Fire Stix packaging, ca. 1951. This and many other Jolly Rancher packages from the period were created by former Disney artist Bob Cormack.



Jolly Rancher advertisement, ca. 1960

The Harmsens sold their shop in Golden in 1951. However, they were still responsible for supplying their franchise stores with chocolates, and the candy manufacturer they used struggled to keep up with demand. Additionally, the Harmsens were receiving an outpouring of requests for one of the earliest Jolly Rancher products: “Fire Stix” cinnamon taffy sticks first sold in 1952. This spurred the couple to remodel their family ranch in Wheat Ridge, Colorado to serve as the factory for their candy business. The site was renamed “Sugar Bar Ranch” and outfitted with candy making equipment.

By 1979, the hard candy’s growth in popularity — coupled with the rising costs of chocolate making — had prompted the company to discontinue their chocolates and



Super Chews advertisement, 1974

focus only on hard candy. Notable “Famous for Flavor” products included the Stix line, as well as Ranch-O-Pops, Super Chews and Stix Kisses. By 1985, Jolly Rancher candies came in 13 different flavors.

The Harmsens sold Jolly Rancher to Beatrice Foods Company in 1966. The brand operated as an independent division of Beatrice Foods, maintaining their company identity, personnel and products. Co-founder Bill Harmsen continued to serve as president of Jolly Rancher until 1977. Confectionery company Leaf, Inc. then acquired the brand in 1983. The Hershey Company — at the time called Hershey Foods Corporation — acquired Leaf, Inc. in December 1996, acquiring the Jolly Rancher brand as well as Whoppers, Milk Duds, Good & Plenty, PayDay, Heath, Rainblo and Super Bubble.



Leaf products, 1984

As a part of the Hershey lineup, Jolly Rancher continued to expand. New products such as Jolly Rancher lollipops, gummies and ropes were introduced. India became the brand’s first international market outside of North America in 2013. Jolly Rancher sales in 2024 totaled \$400 million, a 25% increase from the previous year. Today, watermelon is the most popular Jolly Rancher flavor. From its years in Golden, Colorado to Hershey, Pennsylvania, Jolly Rancher continues to be a beloved candy.

YOUTH VOLUNTEER OPPORTUNITIES AT THE HERSHEY STORY



Do you know a student age 12 to 16 who enjoys history and working with others? Invite them to apply to The Hershey Story’s Past Master program!

These youth volunteers provide interactive activities for museum guests of all ages and share facts about the town of Hershey and the chocolate making process. Past Masters also assist guests with scavenger hunts and work with camp groups and children’s programs. Participants are asked to commit to volunteering a minimum of seven times during the summer; shifts are available most days during the museum’s operating hours. Applications will be accepted through Friday, May 15, 2026, or until all spots are filled.



The program runs from Wednesday, June 17 through Tuesday, September 1. Individuals are required to attend orientation sessions on June 17 and June 18. Additional details and the online application can be found [here](#). Contact Susan Hetrick at smhetrick@hersheystory.org or call 717.520.5587 with questions.

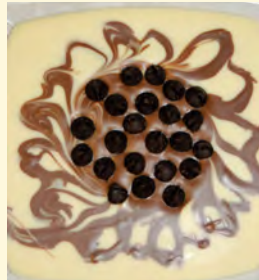
Summer is Sweet in the Chocolate Lab

From chocolate beach bars to s'mores galore, Chocolate Lab participants can create something amazing—and delicious—in the Lab this summer! Learn how cocoa beans are grown, harvested and processed into delicious milk chocolate in these hands-on, interactive classes. Forty-five minute classes are ideal for adults and children ages 5 and older. Tickets are available at The Hershey Story admissions desk on the day of the class on a first-come, first-served basis; space is limited. [Click here](#) for more information and daily class schedules.

This summer's classes include:

Art of Chocolate

Whether it's milk, white or dark, making chocolate is a work of art. Learn the origin of chocolate and the ingredients used in each of its varieties. While getting the inside scoop on what makes chocolate so tasty, you will create your own "art" using three types of chocolates.



Chocolate Medallions

Milton Hershey developed his unique formula using a hand-selected blend of cocoa beans. Discover where this fruit comes from, and how it is harvested and transformed to become the chocolate we all love. Choose from a variety of ingredients and design your own flavorful chocolate treat.

Planet Chocolate



Learn some delicious geography by finding out more about the many places around the globe where cocoa beans are grown. You will be guided to recognize differences in cocoa beans' appearance and taste. You will also make your own unique bar to take home!

S'mores Galore

Have some summer fun as you make your own, sweet variation on s'mores (without the fire, of course). Learn the origins of this campfire confection and some Hershey's trivia. You'll also learn about chocolate's journey from tree to graham cracker.



Beach Bar

Celebrate summer by designing your very own seashore-themed milk chocolate bar using a white chocolate seashell and plenty of "sand." Take a walk along our "chocolate beach boardwalk" as you learn about Hershey's classics. Also find out where and how cacao is grown, harvested and transformed into your favorite chocolate confections.



Fireworks Bar

Celebrate everyone's favorite summer tradition with a chocolate bar that really pops! Mold together milk chocolate, red, white and blue star sprinkles and vanilla ice cream flavored popping candy for a firework themed treat. Once finished, you'll learn all about how cacao becomes cocoa and cocoa becomes chocolate! Offered in July only.



Yankee Doodle Bar

Mold a milk chocolate bar and top it off with red, white and blue candy sprinkles to create your own edible American flag. Find out where and how cocoa beans are grown and transformed into your favorite chocolate confections. Offered only during Memorial Day weekend, Fourth of July and Labor Day weekend.

Celebrate Milton Hershey's Birthday Weekend with Celebration Caramels!

Friday, September 11 - Sunday, September 13

Celebrate Milton Hershey's birthday by dipping your own rich, butter caramels in milk chocolate. Try our original and decadent caramel recipe in honor of Mr. Hershey's success in the caramel business!

Celebrate Catherine Hershey's Birthday With Us!

Monday, July 6 from 10 a.m. – 3 p.m.

Included with Museum admission, free for members



Join us to honor Catherine Hershey on her birthday! Guests can enjoy crafts as they learn about Catherine "Kitty" Hershey, whose legacy of service and compassion continues to shape the community today. Visitors can create their own decorative hats inspired by Kitty's fashion while discovering her role in broader movements of women-led reform in the early twentieth century.

Sips & Sweets

An Evening in the Chocolate Lab

Thursday, July 16 from 7 – 8 p.m.

Join us for an evening of chocolatey fun! Guests will start with a fondue lightly infused with mild, dried chilies and a variety of delicious dippers, followed by a pavlova cup filled with fermented fruit and chocolate ganache. While enjoying the first two courses, you will learn to make the final dessert: a triple toasted vanilla ice cream with brownie crisps. A passionfruit and ginger mocktail will also be provided. This BYOB event is for guests 21 and older.



Members: \$30; Non-Members: \$35

Space is limited; **reserve your tickets here today!**

THE HERSHEY STORY

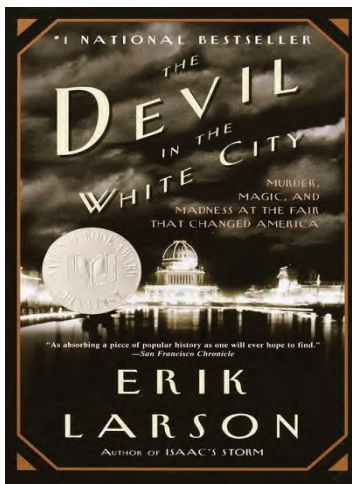
THE MUSEUM ON CHOCOLATE AVENUE

SAVE THE DATES!

Join Us for a Book Club!

The Hershey Story Museum

Tuesday, May 5 from 2 to 3:30 p.m. or 7 to 8:30 p.m.

The Devil in the White City: Murder, Magic, and Madness at the Fair That Changed America

Eric Larson's tale of the 1893 World's Fair in Chicago intertwines the grandeur of the fair with the gruesome actions of a serial killer. The historical characters in this non-fiction work come to life through Larson's detailed prose, a style that stems from his meticulous research and desire to humanize the past. And although he's not mentioned in the book, the impact of the fair on Milton Hershey is part of the historical backdrop of the era

portrayed in the novel. This event is free, but seating is limited and registration is required **here**.

Due to mature themes, participants must be at least 18 years of age.

SCOUT BADGE WORKSHOPS


Cadette Girl Scout "Business Creator" & Senior Girl Scout "Business Startup" Badge Workshop
**Saturday, September 19, 2026
from 9:30 a.m. to 12:30 p.m.**

Girl Scouts will work in teams to brainstorm ideas and create an actual chocolate confectionary product for a specific demographic, develop a business plan for their unique product, and then present their product and marketing strategy to the group.

Cost is \$18 for Cadette/Senior Scouts and \$15 per Leader/adult chaperone. Register online at HersheyStory.org beginning July 1.


Scouting America "Entrepreneurship" Merit Badge Workshop
Saturday, October 24, 2026 from 9:30 a.m. to 2:30 p.m.


Milton Hershey was a successful entrepreneur whose keen business sense and philanthropic approach were instrumental in establishing his chocolate company over a century ago. In this workshop, Scouts will explore the skills and processes essential to developing a business as they create a business plan for a chocolate confectionary product and learn about market trends, financial concerns, as well as marketing and promotional methods.

Each Scout will make a chocolate confection to take home as well as explore the museum's exhibits during the workshop.

Cost is \$18 for Scouts, \$15 per Leader/adult chaperone. Register online at HersheyStory.org, beginning August 1.

**Summer Camp Field Trips at The Hershey Story**

Programs offered June 22 through August 21, 2026

For Pre-K through grade 8


CANDY
 Chemistry

Calling all Candy Chemists! Do you like fun experiments? How about tasty treats? Come explore the exciting science behind how sugar is transformed to create the sweet treats we love to eat! Discover the difference between physical and chemical changes, examine various crystal formations in food, and understand how some candy gets its sour punch. There will be candy taste tests and lots of hands-on activities. Plus, everyone

will make their own science-themed chocolate creation to take home!

Cost per camper: \$17
One free chaperone with every 5 campers
Additional adults: \$17

The program will last about an hour and the scavenger hunt takes about 45-60 minutes, so please plan on at least 90 minutes to two hours for the full experience.

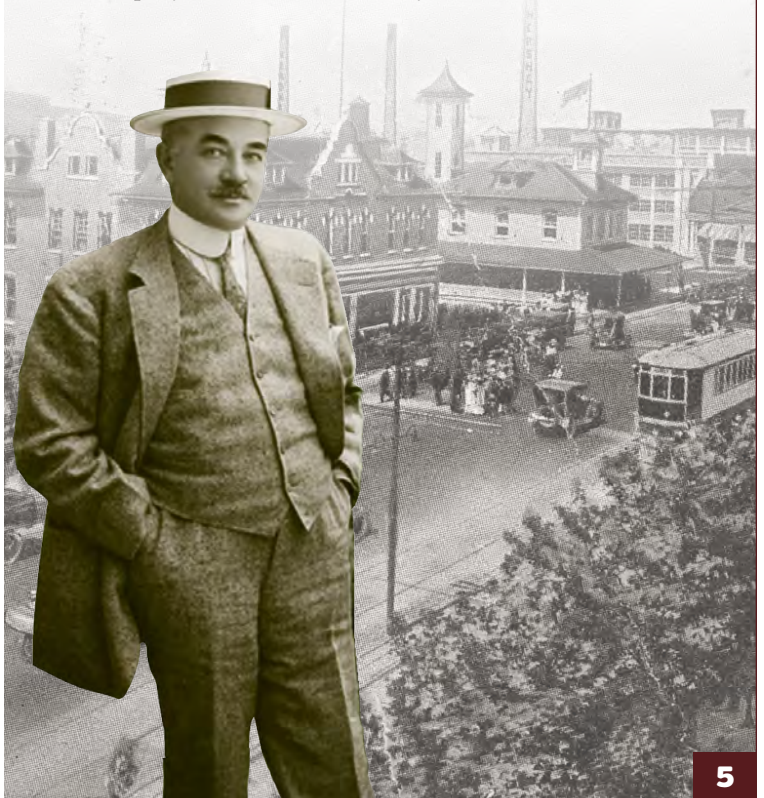
Space is limited; make your reservations early!

Register online [here](https://HersheyStory.org).

Questions? Please call 717.520.5588 or

 email elalindsay@hersheystory.org.
Milton Hershey's Birthday Celebration
Sunday, September 13 from 1 p.m. to 4 p.m.
ChocolateTown Square Park in downtown Hershey

Join us to celebrate Milton Hershey's 169th birthday! This year's expanded event will include multiple musical performances, sweet treats, kids' activities and more! Milton Hershey's success story is a great example of American ingenuity, especially as we celebrate our nation's 250th birthday and the upcoming release of a movie highlighting his life. This event is sponsored by The Hershey Company, Milton Hershey School, Hershey Entertainment & Resorts, Hershey Trust Company and The M.S. Hershey Foundation.



Celebrating Our Volunteers: Introducing a New Rewards Program

Hershey Gardens and The Hershey Story Museum are proud to introduce a new rewards program created especially for our dedicated volunteer adults and students. This program will recognize and reward the time and talents our volunteers bring to help support our missions.



Volunteer Rewards

20 Hours

Volunteer earns two Hershey Gardens admission tickets and two Hershey Story Museum tickets

80 Hours

Volunteer earns a Flex Membership (Allows the member to bring any four guests per visit.)

40 Hours

Volunteer earns an Individual Membership (Family Memberships for Students)

****Exclusively for Student Volunteers****

50+ Hours

Student volunteers can also earn a National Service Honor Award, which will be awarded at the Volunteer Reception.

60 Hours

Volunteer earns a Family Membership

Volunteer rewards are based on hours accumulated January through December, and will be presented at the Volunteer Reception each February. For those unable to attend the reception, rewards will be mailed.

All memberships awarded through the program are valid for one year.

Interested in Joining Our Team? Become a Volunteer!

Volunteers are a vital part of The M.S. Hershey Foundation. Last year alone, 157 volunteers generously donated 6,184 hours of their time and talents to The Hershey Story and Hershey Gardens. Thank you!

Consider joining our team! You'll make new friends, have fun and give back to your community. We offer flexible hours in a fun environment. For more information, please call Debbie DiNunzio at 717.508.5958 or e-mail Debbie at ddinunzio@hersheypa.com.

Volunteer Opportunities



Volunteers at The Hershey Story assist with school groups and public programs throughout the year. Volunteers guide students through the museum and support our Homeschool Days. They also help with Scout workshops and special holiday activities. **Learn more here.**

Hershey Gardens volunteers introduce children to nature through youth education programs, as well as by engaging visitors in the Butterfly Atrium and assisting staff in beautifying the gardens. Volunteers are also needed for special events such as Pumpkin Palooza. **Learn more here.**

Hershey Gardens: What to See from A to Z

Hershey Gardens is known for horticultural excellence, but there's so much more to enjoy. **Here's your list - from A to Z - of what to see!**

Arbor Bench – Take a moment to rest beneath shaded arches and flowering vines. These peaceful benches offer a perfect place to pause and enjoy the beauty of the Gardens.



Boy with the Leaking Boot Statue – Located in Swan Lake, this charming and beloved statue was purchased by Milton Hershey in 1913 for his High Point home. It was then relocated to Hershey Park and later, the Hershey Zoo Reptile House. It was moved to its current location in 1938. It was removed for conservation in 1998 and replaced with a replica.



Children's Garden – Filled with surprise hideaways and whimsical creatures, this educational garden is perfect for the whole family.

Dawn Redwood – Once thought to be extinct and rediscovered in China in the 1940s, this “living fossil” stands as a remarkable reminder of nature's resilience.

Educational & Horticultural Wing of The Milton & Catherine Hershey Conservatory – Explore this beautiful sunlit wing, filled with dozens of lush tropical plants.



Four Seasons Statues – Located in the Arboretum, these iconic Greek goddesses represent each of the four seasons and the ever-changing beauty of nature.

Garden Shop – Take a piece of Hershey Gardens home with you! The Garden Shop offers unique gifts, children's books and toys, and a variety of nature-inspired treasures.

Hoop House & Student Garden – Located in The Children's Garden, this special garden helps families discover how easy it is to grow a simple garden at home. Families can learn sustainable gardening techniques and how to create a garden that is easy, fun and safe for pets and wildlife.

Indoor Butterfly Atrium – Walk among hundreds of exotic butterflies in this tropical setting filled with lush plants, flowing water and a chrysalis cabinet.



Japanese Maple – Admire the delicate leaves and graceful form of these beloved ornamental trees, especially stunning in autumn.

Kaleidoscope – Located in the Senses Garden, the garden kaleidoscope is a unique way for guests to experience nature in ever-changing patterns, simply by peering through a lens into a bowl full of colorful plants.



Labyrinth – Take a quiet walk through this meditative path in the Rock Gardens, specially designed for reflection, relaxation and mindful movement.



Meditation Circle – Located in the Arboretum, this peaceful gathering space invites guests to pause, reflect and connect with nature.

Nature Journaling Kits – Available for guests to borrow and return, these kits encourage observation, creativity and a deeper connection to the natural world.

Oak Grove – Stroll beneath towering oaks that provide shade, beauty and habitat for wildlife.

Pretzel Maze – Pennsylvania is known for its pretzels—but none as unique as this one, which features white quartz rock as its “salt.” Located in The Children's Garden.

Quebec Linden Tree (*Tilia americana* var. *neglecta*) – The only registered tree of its kind in Pennsylvania, this beauty is currently listed as a “Pennsylvania Champion Tree.” See it between the Perennial Garden and Nut Grove.



Rebecca at the Well – Purchased by Milton Hershey in 1913 for his High Point home, this stone statue now graces the Historic Rose Garden.

Scavenger Hunts – Turn your visit into an adventure! Seasonal scavenger hunts encourage guests to explore and discover hidden treasures throughout the Gardens.

Testa Fig Tree – Once a Hershey landmark, this famous fig came from the Italian Testa family, who carefully tended to it since the mid-1950s. When the Testa family put their house up for sale in 2005, Hershey Gardens was happy to give the fig tree a new home in our Herb Garden.



Umbrellas – Protect yourself from the sun by borrowing an umbrella, generously provided by Penn State Health Milton S. Hershey Medical Center.

Volunteers – Our dedicated volunteers help make Hershey Gardens thrive. Interested in joining them? Visit HersheyGardens.org to learn more.

Walking Program – Join our walking program, designed for all levels of walkers. Simply ask for your Walking Program punch card at your first visit. Bring it back every time you visit the Gardens to walk, and we'll punch your card. For every 10 walks, you'll get a free pass to bring a friend! Sponsored by Penn State Health.

Xylophone –

Musical instruments are often made from plants. Play the wooden xylophone or chimes in The Children's Garden and explore plants with musical connections.



Year 'Round – Hershey Gardens is open year 'round, offering something new to experience in every season.

Zoology Zone – Located inside the Butterfly Atrium, the Zoology Zone features unique frogs, tarantulas, a scorpion – even a gecko – from around the globe in glass terrariums. See fascinating creatures from Asia, Australia and South America, as well as cool bugs from our own backyard.

Planting the Past: Donated Heirloom Seeds Take Root at Hershey Gardens

Hershey Gardens is pleased to be growing heirloom vegetables from the Landis Valley Village & Farm Museum Heirloom Seed Project in Lancaster, Pennsylvania. For more than 35 years, the Heirloom Seed Project has preserved and shared historic seed varieties along with the farming traditions that accompany them.

“We are so appreciative to the Heirloom Seed Project for supporting our spring school program season with donations of heirloom seed varieties,” said Rebecca Lawrence, manager of education and public programs. “Growing heirlooms helps us teach students and families about historic preservation, as well as the culture that helped sustain and preserve these plants.”

The project also connects to Hershey’s own agricultural roots. In 1866, Milton Hershey’s father, Henry, maintained a small farm with an orchard near Nine Points in southeastern Lancaster County for about six years with his family. Later, in 1898, Milton Hershey moved his father to Derry Township, where he maintained a small farm and vegetable garden at the Hershey Homestead.

“In the spirit of preserving tradition, it’s possible these Pennsylvania German varieties saved by the Landis Valley Village & Farm Museum’s Heirloom Seed Project were grown in the same foodways traditions practiced by Milton Hershey’s father, Henry, and Milton’s extended Mennonite relatives who were farmers,” said Lawrence.

“Commercial hybridization largely began during the 1930s in the United States,” Lawrence explained. “While there is some debate



about the definition of an heirloom crop, some believe that if a plant variety was grown prior to 1951, when vegetable hybrids became widely available, it is considered an heirloom.” Many of the varieties preserved through the Heirloom Seed Project predate the 1880s, with some dating back to the 1700s.

“We grow both hybrid and heirloom fruits and vegetables at Hershey Gardens,” said Lawrence. “Heirloom seeds are open-pollinated, meaning they are naturally pollinated by wind, insects, or animals.”

Because of this, heirloom plants share consistent genetic characteristics generation after generation. “They were cultivated before modern industrialized farming practices,” said Lawrence. “When you bite into an heirloom tomato, you can be assured it tastes the same as it did for your great-great-grandparents. The taste and appearance of today’s Bull Nose sweet pepper, for example, is the same as the variety Thomas Jefferson grew at Monticello in 1774.”

In a time of increasing climate stress—including extreme heat, wider temperature ranges, drought, and heavy rainfall—heirloom varieties that have endured environmental challenges over decades or centuries may help preserve culturally significant food crops compared to newly developed hybrids.

Modern hybrid varieties, however, are designed for disease resistance, easier growing conditions, and the demands of modern agriculture, including packing and shipping produce to grocery stores.

“This summer in our seasonal display beds, visitors will also see the Penn State Trial Gardens, which test commercially cultivated flowers and hybrid vegetables from seed companies,” said Lawrence. “Students working in our Hoop House will grow hybrid varieties of tomatoes, eggplants, and potatoes as well.”

“In contrast to saving seeds from heirloom plants, saving seeds from hybrids means the next generation may have different characteristics—or in some cases may not produce fruit at all,” said Lawrence. “Growing both heirlooms and hybrids allows us to teach about both.”

This year, students visiting Hershey Gardens on school field trips will plant 15 varieties of fruits and vegetables from the Landis Valley Village & Farm Museum’s Heirloom Seed Project in The Children’s Garden, continuing the tradition of growing and preserving these historic crops.

To learn more about locally grown heirloom seeds, [visit Landis Valley’s Heirloom Seed Project here](#).

THIS SUMMER, BE SURE TO LOOK FOR THESE HEIRLOOM VARIETIES AT HERSHEY GARDENS!

Photographs courtesy of Landis Valley Village & Farm Museum



PA German Red, Bush Lima



Dr. Martin, Lima Bean (pre-1900)
Dr. Harold Martin was a dentist in Philadelphia in the early 1900s.



Scarlet Runner Bean (1700s)



Lutz Beet



Jenny Lind Cantaloupe (1840s) Named after Jenny Lind, the famous opera singer.



PA Dutch Popcorn, Corn (pre-1885)



Early Jersey Wakefield Cabbage (1840) Cabbages like this were considered a traditional field crop in the 19th century, but in the 20th century, families grew this in their kitchen gardens.



Red Russian Kale (pre-1885)



Simpson Lettuce (1850s)



Hinklehatz Hot Pepper (1800) In translation, Hinklehatz means “chicken heart” in PA Dutch, in reference to its shape.



Bull Nose Sweet Pepper (1774)



Patty Pan Summer Yellow Squash



Mammoth German Gold Tomato (1880s)



Riesentraube Cherry Tomato (1856) This variety has giant grape-like clusters, referring to its literal translation of its German name.

Hershey Gardens' Living Legacy of Champion Trees

By Deb Wiles, Director of Horticultural Operations

Did you know Hershey Gardens is home to some of the most remarkable trees in Pennsylvania? Some of these towering specimens predate the Gardens themselves, while a select few have earned distinction as “Champion Trees” through the Pennsylvania Champion Tree Program—a volunteer initiative of the Pennsylvania Forestry Association that documents the largest trees of each species across the Commonwealth.

For more than 50 years, conservationists involved in the Big Tree Program have searched for and recorded Pennsylvania’s most impressive trees. Their work helps preserve these living landmarks while educating the public about the vital role large trees play in sustaining forests and protecting our environment.

Today, the Big Trees of Pennsylvania registry includes nearly 2,000 entries. While some trees grow on private land, others, like those at Hershey Gardens, can be enjoyed

in public spaces. Our original nominations were submitted in 1989 by Rick Koval, a Pennsylvania-based naturalist and educator who contributed significantly to the Champion Tree registries. Additional nominations have since been made by Hershey Gardens staff, and efforts are now underway to update measurements and records for these extraordinary trees.

Of the six trees originally nominated from Hershey Gardens, five are still standing strong today. As part of an ongoing tree-mapping initiative, these notable specimens are receiving renewed attention. Each week, volunteer Toni Graybill and Gardener Maureen Bee-man, our dedicated “Tree Patrol,” carefully document the Gardens’ collection. Their work includes recording locations, identifying species and cultivars, measuring height and girth, and updating records to ensure accuracy in the state registry.

New nominations are also in progress, including a massive swamp white oak (*Quercus*

bicolor) estimated to be over 100 years old, and a neighboring willow oak (*Quercus phellos*). Standing side by side, these impressive trees seem to compete for size and stature. Once registered, the willow oak will be the only tree of its species listed in Dauphin County, while the swamp white oak will join just two others in the county.

The data collected through this mapping project will be added to a plant records management database, allowing staff to track tree health, maintenance needs and historical significance. These efforts not only preserve important information but also help tell the evolving story of Hershey Gardens’ landscape.

As documentation continues, additional nominations will be submitted, ensuring that the Gardens’ most impressive trees receive the recognition they deserve for generations to come.

Special thanks to Toni Graybill for compiling the registry data.

Hershey Gardens' Current Collection of Pennsylvania Champion Trees:

- **Quebec Linden** (*Tilia americana* var. *neglecta*) - the only tree of its kind currently registered in the state
- **Fastigate European Beech** (*Fagus sylvatica* var. *fastigiata*) - also the sole registered specimen
- **Tanyosho Pine** (*Pinus densiflora* ‘Umbraculifera’) - one of only two registered
- **Weeping Norway Spruce** (*Picea abies* ‘Pendula’) - one of three registered
- **China Fir** (*Cunninghamia lanceolata*) - one of eight registered



Weeping Norway Spruce (*Picea abies* ‘Pendula’)



American Linden (*Tilia americana* var. *neglecta*)



Tanyosho Pine (*Pinus densiflora* ‘Umbraculifera’)



China Fir (*Cunninghamia lanceolata*)



Fastigate European Beech (*Fagus sylvatica* var. *fastigiata*)

No Mow May? Plant May Flowers Instead

By Lois Miklas, Penn State Master Gardener, Lancaster County
and Retired Educator, The M.S. Hershey Foundation



Have you heard the buzz about “No Mow May”? The idea is to skip mowing the lawn in May so weeds can grow and bloom to support pollinators early in the season. It also assumes that you do not treat the weeds in your lawn with herbicides. But according to Penn State’s Center for Pollinator Research, North American native plants, trees and shrubs that grow beyond the lawn (not in it) are the best support for pollinating insects. This is good news for those who prefer a neatly trimmed lawn yet still wish to support pollinating insects.

Where did the concept of “No Mow May” come from?

“No Mow May” is an ecological practice that started in Great Britain, where meadow flowers such as cowslip, meadow buttercup, primrose, pyramidal orchid, wood forget-me-not, wild garlic, and more support diminishing British pollinator populations.

What is different about North American lawns?

Like turfgrass itself, many of the weeds that grow in North American lawns are transplants from Europe and Asia. Some of these, such as dandelions and white clover, support generalist pollinators (which do include honeybees), but they do not provide the best nutrition and are not visited by our native North American pollinators. Many lawn weeds, such as bull thistle and ground ivy, have invasive tendencies. In addition, unmown lawns can harbor ticks in areas where people and pets are likely to be exposed to them.

Which plants support early-season pollinators?

The Center for Pollinator Research suggests that blooming fruit trees, such as apple, pear and stone fruits, are some of the best nutritional sources for a diverse mix of pollinators. In addition, trees that we often do not associate with blooms—willows, maples and oaks—are also crucial to pollinators in April and May. A diverse collection of native plants that bloom at different times during the growing season provides sustenance for both native bees and honeybees. **The native perennials listed to the right provide food for pollinators early in the season:**



Blue false indigo (*Baptisia australis*) has tall spikes of deep purple-blue flowers.



Coreopsis varieties sport daisy-shaped yellow flowers and lacy foliage.



Eastern columbine (*Aquilegia canadensis*) is our native columbine, with two-toned red and yellow flowers.



Foam flower (*Tiarella cordifolia*) features ethereal clusters of pinkish-white flowers above heart-shaped leaves.



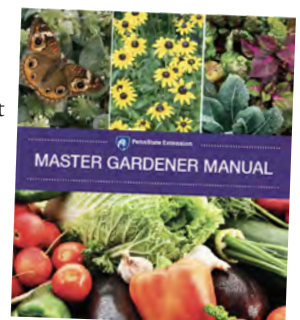
Golden ragwort (*Packera aurea*) makes an excellent groundcover, with yellow blossoms in early spring and lush foliage that persists through the growing season.



Woodland phlox (*Phlox divaricata*), with clusters of blue-pink flowers, is a favorite of hummingbirds.

Where can I find early-blooming native perennials?

- **The Pennsylvania Native Plant Society** publishes an online guide to native plant sources.
- Check with your county Master Gardener Garden Hotline for a short list of local nurseries that carry native plants, such as those described above. **A directory of Garden Hotlines can be found here.**
- Also check the Penn State Extension website for a list of **Master Gardener plant sales**, which often feature native perennials.



Mother’s Day Membership Special Your Mom Called.

This Year, She Wants A Hershey Gardens Membership for Mother’s Day!



Purchase any gift membership and receive a membership card holder and two free tickets! (We won’t tell your mom if you want to keep the tickets for yourself!)

This special is good through May 10, in-person only at Hershey Gardens.

A Spring Homecoming: Hershey Gardens Welcomes Chimney Swifts & Purple Martins

At the front of the Milton & Catherine Hershey Conservatory, two new structures rise above the meadow—subtle in form, but powerful in purpose. A tall chimney tower and a gourd rack now provide critical nesting and roosting habitat for two migratory bird species, the chimney swift (*Chaetura pelagica*) and the purple martin (*Progne subis*). Installed through the Pennsylvania Game Commission's Cavity Nesting Grant, these structures represent an exciting step forward in Hershey Gardens' ongoing commitment to conservation, education, and stewardship.



Calling all Swiftly Fans
Highrise apartment available for single couple
Surrounded by natural landscape | Meticulously handcrafted
Whirlpools optional | High pitched loud offspring welcome

Purple martins fly out of an existing purple martin colony.

Each spring, these birds return to Pennsylvania after traveling thousands of miles from their wintering grounds in South America. Purple martins spend the colder months in Brazil, Bolivia, and Argentina, while chimney swifts winter in the Amazon basin of Brazil, Peru, and Ecuador. Their arrival in April and May marks the beginning of the breeding season, a brief but vital window before they begin their return migration in late summer. Their presence here connects Hershey Gardens to a much larger ecological story—one that spans continents.



The PA Game Commission and Hershey Gardens staff assemble and measure the chimney swift tower.

Hershey Gardens provides an ideal setting for these species. Our meadow ecosystem supports a rich diversity of insect life, which is essential for insect-eating birds like swifts and martins. These birds play a crucial role in maintaining ecological balance. A single chimney swift can consume thousands of insects each day—beetles, flies, moths, wasps, and more. Purple martins feed on larger flying insects such as dragonflies and butterflies, often foraging at lower heights over open fields and near water.

Often heard before they are seen, chimney swift's high-pitched chatter will echo above the Conservatory from May through August. Their bodies are built for speed and endurance—slender, sooty-gray, and shaped like small flying torpedoes. These birds spend nearly their entire lives in flight. They eat, drink, bathe, and even gather nesting material while airborne.

Unlike most birds, chimney swifts cannot perch on branches or stand on the ground. Their extremely short legs and curved claws are adapted exclusively for clinging to vertical surfaces. Using their stiff, spine-like tail feathers for support, they brace themselves against the interior walls of chimneys or similar structures. There, they construct small cup-shaped nests made of twigs, carefully glued together with their own saliva. Both parents share in building the nest and raising their young, whose calls can be surprisingly loud.

At dusk, chimney swifts offer one of nature's most captivating spectacles. Large groups may gather overhead before spiraling downward into a shared roosting site—a phenomenon often called a "Swiftnado." As they descend in a funnel-like formation, each bird makes a sharp turn at the last moment, clinging to the interior wall alongside dozens, hundreds, or even thousands of others. This communal roosting helps conserve heat on cooler nights and highlights the remarkable social behavior of the species.

Purple martins are also closely tied to human-provided housing. Historically, Indigenous communities encouraged martins to nest nearby by hanging hollowed gourds, recognizing their value as natural insect control. Today, purple martins in the eastern United States rely almost entirely on artificial structures such as martin houses and gourd racks. Our newly installed gourd rack continues this long tradition, providing safe nesting spaces in an open meadow environment ideal for their feeding habits.

Purple martins are also highly social and site-loyal birds. Older individuals often return to the same nesting locations year after year.

By installing this structure, Hershey Gardens offers a welcoming site for these first-time nesters, contributing to the growth and sustainability of local populations.



Hershey Gardens education staff and Volunteer Payton prepare gourds for hanging on the gourd pole. Purple martins prefer to nest on a bed of pine needles.

Despite their adaptability, both chimney swifts and purple martins have experienced significant population declines over the past 50 years. The causes are complex but interconnected. Habitat loss due to development and deforestation has reduced available nesting sites, and insect populations. Widespread pesticide use further diminishes their food sources. Changes in architecture—particularly the decline of traditional brick chimneys—have removed essential nesting habitat for chimney swifts. Purple martins face additional challenges from invasive species such as European starlings and house sparrows, which compete for and often overtake nesting spaces.

In response to these challenges, conservation efforts like the Pennsylvania Game Commission's Cavity Nesting Program are essential. By providing artificial nesting structures, we can help offset habitat loss and support the recovery of these species. At Hershey Gardens, this initiative also creates meaningful opportunities for guests to observe wildlife up close, learn about migratory patterns, and better understand the role each species plays in a healthy ecosystem.

Throughout the spring and summer, our team will monitor these structures, track activity, and share updates as these birds settle into their new home. Guests may notice the swift, darting flight of chimney swifts high overhead or the graceful gliding of purple martins across the meadow.

We invite you to visit Hershey Gardens this season and experience this remarkable migration firsthand. These birds are more than seasonal visitors—they are part of a shared global ecosystem, one that depends on thoughtful stewardship and collective care.

How You Can Help

- Reduce or eliminate pesticide use to protect insect populations
- Plant native species and remove invasive plants to support local ecosystems
- Support bird-friendly agriculture, such as Smithsonian Bird Friendly® certified coffee
- Maintain suitable chimney habitats when possible (avoid capping during nesting season)

MARK YOUR CALENDAR!

All activities below are included in admission; free for members, except where a cost is noted.

You Scream, We Scream... Sarah's Creamery

Sunday, April 26
from 11 a.m. to 2 p.m.
Saturday, May 23 and Sunday May 24
from 11 a.m. to 2 p.m.

Enjoy Sarah's Creamery festive ice cream truck, featuring flavors from the Berkey Creamery at Penn State University's Main Campus, for an additional fee.



World Labyrinth Day

Friday, May 1 from 10 a.m. to 2 p.m.

World Labyrinth Day is traditionally celebrated the first Saturday of May. Drop in to walk our labyrinth and participate in a fun family craft in the Rock Garden.

National Public Gardens Day

Friday, May 8 from 9 a.m. to 5 p.m.

Celebrate with us!

Click here for a half-off admission voucher, valid only for Friday, May 8, 2026.



Mother's Day Weekend: Free Admission for Moms!

Saturday, May 9 and Sunday, May 10 from 9 a.m. to 5 p.m.



On Sunday, see a variety of rhododendrons and azaleas from the Mason Dixon Chapter of the American Rhododendron Society. Display located in the Education Center in The Children's Garden. For an additional fee, guests can enjoy Sarah's Creamery on Saturday and Sunday from 11 a.m. to 2 p.m. and Noel's Café on Sunday only from 9 a.m. to 2 p.m.



Susquehanna Iris Society Show

Saturday, May 16 from 9 a.m. to 5 p.m. in the Garden Cottage



Enjoy brilliantly colored irises and arrangements from members of the Susquehanna Iris Society. Knowledgeable members will be available to answer questions. Plus, enjoy Sarah's Creamery from 11 a.m. to 4 p.m. for an additional fee.

National Red Rose Day

Saturday, June 13 from 9 a.m. to 5 p.m.

National Red Rose Day is the annual celebration of the red rose – a universal symbol of love and romance. Join us for 30-minute Historic Rose Garden tours at 10 a.m. and 2 p.m.



Father's Day: Free Admission for Dads!

The Gathering in the Garden: Rolls Royce Car Show (9 a.m.- 3 p.m.)

Sunday, June 21 from 9 a.m. to 6 p.m.

Bring dad to enjoy 3,000 roses in full bloom on the first day of summer! Plus, experience a stunning display of Rolls-Royce and Bentleys and learn about their history from members of the headquarters region of the Rolls-Royce Owners' Club. Vehicles will be parked inside Hershey Gardens around Swan Lake. For an additional fee, guests can enjoy Noel's Cafe from 9 a.m. to 2 p.m. and Sarah's Creamery from 11 a.m. to 2 p.m.



Zoology Zone Interactive Cart

Monday through Friday, June 22 through August 14

from 11 a.m. to 12:30 p.m.



Come meet some new "friends" at the Zoology Zone Interactive Cart! The cart will be stationed in the Conservatory and will feature several small animals and arthropods, along with deceased butterfly specimens that guests can touch and feel. Staffed by Hershey Gardens Volunteers and Hershey Gardens staff. On Fridays, visitors can watch the Gardens' insectivores and herptiles as they receive a nutritious snack.



Gretna

Gretna Theatre Summer Family Series

How I Became a Pirate

Sunday, June 28 at 1 p.m.

Performance held in The Children's Garden Amphitheater, weather permitting. In the event of inclement weather, performances will be cancelled.



AMERICA

America250

Saturday, July 4 from 10 a.m. to 2 p.m.

Sunday, July 5 from 10 a.m. to 2 p.m.

Celebrate our nation's semiquincentennial and join us for family activities and unique collection highlights.

Stationed tour guides throughout the gardens will highlight the Lincoln cultivar rose, the *Franklinia alata*, the American Heritage Chestnut and more! Educational activities will relate



to community design, animal and plant habitats, and more in The Children's Garden. For an additional fee, enjoy ice cream treats from Sarah's Creamery beginning at 11 a.m.

Music in the Gardens

Thursday, August 13 from 6 - 8 p.m.


Generations Big Band

Thursday, August 20 from 6 - 8 p.m.

The Best of Broadway

Thursday, August 27 from 6 - 8 p.m.

Rhythmic Groove, featuring Rose Hudson

Join us for three evenings of beautiful music in the Gardens from  **PNC TERRACE** the new PNC Terrace! Guests are invited to bring their own beverages and snacks, as well as chairs or a blanket. The Butterfly Atrium will be closed. Regular admission rates apply.



Sponsors:

Robert Ackerman | Robert & Linda Pugliese | Dr. Thomas Davis



Live Feedings at the Zoology Zone Interactive Cart

Fridays: September 4, 11, 18 & 25 from 12 to 12:30 p.m.

Join us to watch the Gardens' insectivores and herptiles receive a nutritious snack!

Marvelous Mondays

July 6, 13, 20, 27 and August 3 from 10 a.m. to 12 p.m.

Mondays are marvelous in The Children's Garden! Join us for kids' crafts led by Volunteers, and explore weekly themes. Come back each week to discover new activities and greet special guests. Additional guests may be added!

Themes:

- July 6:** America 250
- July 13:** Paws, Claws, Scales and Tails with ZooAmerica
- July 20:** Agriculture with PA Friends of Ag Immersion Lab and the Lancaster County Beekeepers Society
- July 27:** Pollinators
- August 3:** Exotic Plants and Animals



Hershey Area Art Association Show & Sale

Friday, September 4 through Sunday, September 6 from 9 a.m. to 6 p.m.

Enjoy fabulous works of art at the "Blooming Art" display in the Milton & Catherine Hershey Conservatory.

Hershey Gardens Member Reception

Wednesday, September 30 from 4:30 to 6 p.m.

Members, look for your invitation in the mail!



Bug-O-Rama

Sunday, September 20 from 10 a.m. to 3 p.m.

It's the 10th anniversary of Bug-O-Rama! Participate in a variety of fun bug activities with Penn State Entomology, Ryan the Bug Man, ZooAmerica, Lancaster County Beekeepers and PA Bat Rescue, among others. Plus, enjoy Sarah's Creamery for an additional purchase. **See the full schedule of events here.**

Bonsai Exhibit by Susquehanna Bonsai Club

September 23 through October 10

from 9 a.m. to 5 p.m.

Marvel at a variety of bonsai specimens from the premiere bonsai club of the Susquehanna Valley.



Bonsai Demonstration by Susquehanna Bonsai Club

Saturday, October 3 from 10 a.m. to 2 p.m.

Join members of the Susquehanna Bonsai Club for multiple demonstrations on how to take care of bonsai specimens. In case of inclement weather, demonstration will be moved to the Conservatory.



PA Children's Outdoor Bill of Rights Day

Friday, October 9 from 10 a.m. to 1 p.m.

Learn about the PA Children's Outdoor Bill of Rights, which promotes healthy development and environmental equity. Enjoy activities in The Children's Garden and take part in a planting activity. Plus, kids come for free! Get one free junior admission for each paying adult ticket on October 9 only.



October 17, 18, 24 and 25 from 9 a.m. to 5 p.m.

Check HersheyGardens.org in the coming months for more details!





Eco-Fiction Book Club

Join us to explore works of eco-fiction, nature and environment-oriented works, which often include a human element. It is not necessary to attend all sessions - join us when you can! New participants are always welcome. We encourage you to read each month's selection prior to the meeting to fully participate in the discussion. Located in the Garden Cottage.

Friday, July 24 from 10 to 11:30

a.m. – *Where the Rivers Merge* by Mary Alice Monroe and *Low Country: A Memoir* by J. Nicole Jones



Friday, October 23 from 10 to 11:30 a.m. –

Annihilation by Jeff VanderMeer and *The Secret Life of Plants: A Fascinating Account of the Physical, Emotional, and Spiritual Relationship Between Plants and Men* by Peter Thompkins



Book selections for each month can be found at your local public library or at any major retailer.

2026 SUMMER CAMPS at HERSHEY GARDENS

Our exciting, hands-on approach to science gives children the unique opportunity to conduct exciting and engaging experiments and activities. We make learning science FUN!

Full day options are \$415/week; half day options are \$240/week.

For more information or to register for the camps, please visit scienceexplorers.com

SCIENCE EXPLORERS®

Fizz, Bang, Boom!

For ages 7 - 11

June 22 - 26

Full day 9 a.m. - 4 p.m.;

Half day 9 a.m. - 12 p.m.



What do you get when you take the physics of motion, add in some electrifying experiments, and mix it up with some chemistry? Every one has a blast! In our half day camp you'll create your own battery-powered invention, experiment with light and flight, make your own kaleidoscope and experiment with giant floating bubbles.

Take a Dive (Two dates)

For ages 7 - 11

June 29 - July 2 (4 day; M - Th)

Full day 9 a.m. - 4 p.m.; Half day 9 a.m. - 12 p.m.

July 20 - 24

Full day 9 a.m. - 4 p.m.;

Half day 9 a.m. - 12 p.m.



Dive into the world of marine biology and oceanography! In our half day camp, you'll dissect a real shark, participate in a fisherman's challenge, examine the anatomy of a fish and learn the ancient technique of gyotaku or "fish rubbing," learn to survive at sea by making your own solar still, engage in a fascinating whale adaptation lab, get creative as you build a kelp forest and design your own submarine. Stay for the full day camp and come face-to-face with some unique sea creatures!



Astronaut Academy

(formerly Far Out Space Academy)

For ages 7 - 11

July 27 - 31

Full day 9 a.m. - 4 p.m.; Half day 9 a.m. - 12 p.m.

3...2...1 BLAST OFF

to discovering space and flight! Half day campers will explore the stars and constellations as you take an out-of-this-world sky tour in our homemade planetarium, prepare for lift-off as you build and launch your own rocket while learning about Newton's Laws of Motion, complete a mission to Mars as you design and build your own model space station and work in engineering teams to construct space capsules that will be used to launch "egg-ronauts"! Full day campers will continue to use their astronaut wits as we build air powered nano-rovers, make craters and dry ice comets, and work with a robotic arm as we learn how astronauts use robots to work on satellites.



Summer Science Mash-Up

Ages 7 - 11

August 3 - 7

Full day 9 a.m. - 4 p.m.;

Half day 9 a.m. - 12 p.m.

Join us as we transform our 2025-26 after-school club topics into an unforgettable week-long camp adventure! Each day brings a brand-new theme packed with hands-on experiments, wild discoveries, and mind-blowing fun. Learn science tricks that look like magic to amaze your friends. Join the Slime Squad for a day of stretchy, squishy, glowing creations. Get messy in the Grossology Lab as you uncover the gross but fascinating secrets of the human body. Tap into your creative side as you build a spin-art machine and mix up fizzing paint to make amazing art.



Jr. Investigative Team

For ages 4 - 6

August 10 - 14

Half day 9 a.m. - 12 p.m.

Hey there, future Science Explorers, do we have the camp for you! Join our team of curious tiny-techs as we explore a new theme each day. Experiment with the power of magnets, investigate the life cycle of beautiful butterflies, discover how birds adapt to their environments, explore the unique properties of water, and make colorful sidewalk chalk! You are never too young to be a scientist! Half day only.

Summer Theatre Camp

July 6 - 10 and 13 - 17

9 a.m. - 12 p.m.

Final Performance: Friday, July 17 at Noon

For students 4th through 8th grade

Join us for a two-week camp and final performance!

Our 13th anniversary show is *Treasure Island*, written by Robert Louis Stevenson and adapted by Jennifer Feldser. Jim Hawkins is given a map which sends him and his friends on an adventurous ocean journey to find the treasure. Led by the infamous Long John Silver, a mutinous crew of pirates will stop at nothing to get to the treasure first! The camp will be complete with auditions, acting games, rehearsals, memorized lines, blocking and swashbuckling fights. We will add costumes, props and small set pieces for a polished show with 30 campers in only two weeks! Our qualified Theatre Academy teachers and counselors are looking forward to getting back to the Gardens and working with and enjoying your children.

Limited spots available, please register early. \$290 + registration fee.

Monday rehearsals are at the Playhouse, Tuesday through Friday rehearsals are at Hershey Gardens. The camp will culminate with a full production on Friday, July 17. For questions, and to be added to a possible wait list, please contact Jill at jillpanyard@gmail.com. Learn more and register at HersheyAreaPlayhouse.com.

HERSHEY THEATRE

Welcome Back!

Since opening in 1933, Hershey Theatre has served as a pillar of cultural enrichment for our community. The Theatre remains a steadfast reminder of Mr. Hershey's vision to bring the arts to Hershey through its stunning architecture and world-class performances.

We extend our sincere thanks to you, our patrons and community, for your patience and support throughout our year-long renovation. This carefully planned project focused on essential infrastructure upgrades while honoring and preserving the Theatre's historic character.

These improvements include:

- completely refurbished heating, ventilation and air conditioning,
- new mechanical and electrical systems,
- 1,904 new seats,
- new carpeting,
- new LED lighting throughout,
- additional aisle lighting,
- improved wi-fi connectivity,
- new handrails in balcony aisles (*coming May/June*),
- additional removable armrests to facilitate wheelchair transfer,
- improved pedestrian crossing,
- improved parking lot spaces, lighting and green space,
- new sidewalks and exterior paver plaza,
- modernized assisted-listening system,
- modernization of the stage,
- new orchestra pit lift,
- new enclosed loading dock to streamline show load-ins,
- expanded and improved building sprinkler system,
- new emergency generator,
- new water and sewer pipes,
- remodeled dressing rooms,
- refurbished, historically-inspired marquee.

We're thrilled to welcome you back to a revitalized Hershey Theatre!

Sincerely,



Donald C. Papson
Executive Director, The M.S. Hershey Foundation



HERSHEY THEATRE APOLLO AWARDS

Tickets
still
available!

Sunday, May 17, 2026 at 7 p.m.
at Hershey Theatre

Celebrate the achievement of high school students in musical and play productions at the 18th annual Hershey Theatre Apollo Awards!

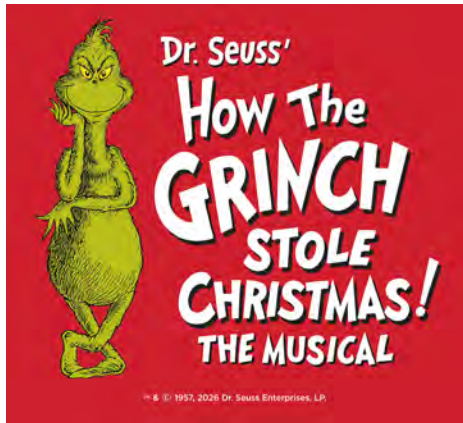
For tickets, visit [HersheyTheatre.com](https://www.HersheyTheatre.com)

HERSHEY THEATRE

BOBBY RAHAL LEXUS DEALERS | LEXUS PRESENTS

26/27 BROADWAY SERIES

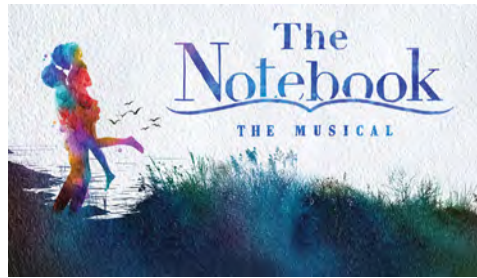
Subscriptions Now Available at HersheyTheatre.com | Starting at \$160



DR. SEUSS' HOW THE GRINCH STOLE CHRISTMAS! The Musical

November 10-15, 2026
 Celebrating 20 years of holiday magic, *Dr. Seuss' How the Grinch Stole Christmas! The Musical* is the record-setting Broadway sensation that has delighted more than 3 million theatergoers across 83 cities and 1,700 performances. The production broke box office records during its Broadway engagements and continues to be a beloved holiday tradition for audiences of all ages. Don't miss what *The New York Times* calls "An Extraordinary Performance! 100 times better than any bedtime story."

Featuring the hit songs "You're a Mean One, Mr. Grinch" and "Welcome Christmas" from the original animated special, this heart-warming musical brings Dr. Seuss' classic story to life on stage. Max the Dog narrates as the mean and scheming Grinch, whose heart is "two sizes too small," hatches a plan to steal Christmas from the cheerful, holiday-loving Whos —only to discover there's more to the season than he ever bargained for. With magnificent sets and costumes inspired by Dr. Seuss' original illustrations, the show transports audiences into the whimsical world of Whoville and breathes new life into this timeless story of the true meaning of Christmas.



THE NOTEBOOK

February 3-7, 2027
 Based on the best-selling novel that inspired the iconic film, *The Notebook* tells the story of Allie and Noah, both from different worlds, who share a lifetime of love despite the forces that threaten to pull them apart. "Full of butterfly-inducing highs and beautiful songs" (*Entertainment Weekly*), *The Notebook* is a deeply moving portrait of the enduring power of love.

Chris Jones of the *Chicago Tribune* says *The Notebook* is "absolutely gorgeous, not to be missed," and *The New York Daily News* calls it "a love story for the ages."



JERSEY BOYS

April 20-25, 2027
 The original Broadway sensation returns to the road! Celebrating 20 years - Jersey style! They were just four guys from Jersey, until they sang their very first note. They had a sound nobody had ever heard... and the radio just couldn't get enough of. But while their harmonies were perfect on stage, off stage it was a very different story -- a story that has made them an international sensation all

over again. The show features all their hits including "Sherry," "Big Girls Don't Cry," "Oh What a Night," "Walk Like a Man," "Can't Take My Eyes Off You," "Beggin'" and "Working My Way Back to You."

Go behind the music and inside the story of Frankie Valli and The Four Seasons in the Tony Award®-winning, original Broadway sensation, *Jersey Boys*. From the streets of New Jersey to the Rock and Roll Hall of Fame, this is the musical that's too good to be true.

Advisories: Flashing strobe lights, loud gunfire, theatrical haze, herbal cigarette smoke and authentic, profane Jersey vocabulary are special effects used in this production.



HEATHERS, The Musical

July 13-18, 2027
 Welcome to Westerberg High, where popularity is a matter of life and death, and Veronica Sawyer is just another of the nobodies dreaming of a better day. But when she's unexpectedly taken under the wings of the three beautiful and impossibly cruel Heathers, her dreams of popularity finally start to come true. That is, until J.D., the mysterious teen rebel, teaches her that it might kill to be a nobody, but it's murder being a somebody...

Praised as "an outrageous, irrepressible musical" (*New York Times*) and "Mischievous fun" (*New York Sun*), *Heathers The Musical* has broken box office records worldwide. Based on the hit film by Daniel Waters, *Heathers The Musical* features book, music and lyrics by Kevin Murphy and Laurence O'Keefe.

SEASON OPTIONS

October 30-November 1, 2026

December 9-11, 2026

February 16-18, 2027

April 8-9, 2027

June 18-20, 2027

THE M.S. HERSHEY FOUNDATION

63 West Chocolate Avenue
Hershey, PA 17033 | 717.298.2200
MSHersheyFoundation.org

The M.S. Hershey Foundation is a 501(c)(3) non-profit educational and cultural organization.



Funding for The Hershey Story is supported by a grant from the Pennsylvania Historical and Museum Commission, a state agency funded by the Commonwealth of Pennsylvania.

The M.S. Hershey Foundation Board of Managers

James W. Brown, Chair
M. Diane Koken
Maria Kraus
Jason Wolfe
Michelle Figlar

Donald C. Papson
President and Executive Director



170 Hotel Road
Hershey, PA 17033
717.534.3492
HersheyGardens.org



63 W. Chocolate Avenue
Hershey, PA 17033
717.534.8939
HersheyStory.org



15 East Caracas Avenue
Hershey, PA 17033
717.534.3405
HersheyTheatre.com



63 W. Chocolate Avenue
Hershey, PA 17033
717.533.1777
HersheyArchives.org



2026 OPERATING HOURS



Now through December 31: 9 a.m. to 5 p.m.*
(*December 24: 9 a.m. to 3 p.m.)
*Closed on Thanksgiving and Christmas Day.

Reduce Your Business Tax Liability and Support Education

Pennsylvania's Educational Improvement Tax Credit Program

Do you own a business? If so, you may qualify for up to a 90% tax credit simply by making a donation to The M.S. Hershey Foundation's educational programs.

What is the Educational Improvement Tax Credit (EITC) program?

Offered by the Pennsylvania Department of Community and Economic Development (DCED), this program allows businesses to receive significant tax credits when they contribute to qualified educational improvement organizations such as The M.S. Hershey Foundation. Funding from the EITC program allows the Foundation to bring increased educational opportunities to hundreds of children every year, thereby continuing its mission to provide educational and cultural enrichment to the residents and visitors of Hershey.

The EITC program amends the Pennsylvania Public School Code to authorize tax credits for businesses that make contributions to educational improvement organizations (EIO).

What is an educational improvement organization (EIO)?

EIOs are non-profit organizations that have been approved by DCED for participation in the EITC program. To become an EIO, the non-profit must apply to the DCED to show how their programs improve the educational opportunities for children. The M.S. Hershey Foundation has been designated an eligible EIO.

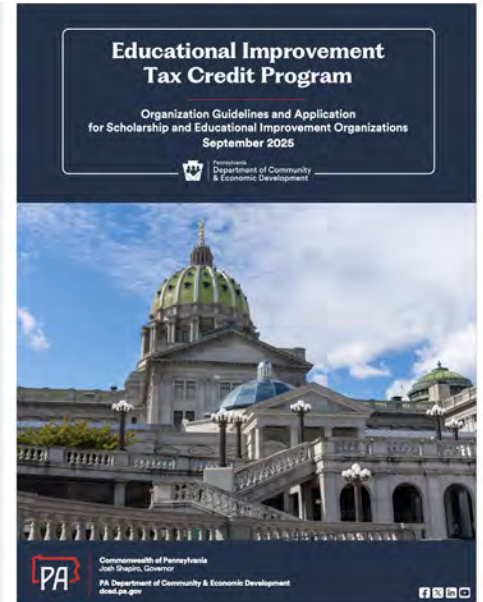
What businesses are eligible?

Businesses authorized to do business in Pennsylvania who are subject to one or more of the following taxes:

- Personal Income Tax
- Capital Stock/Foreign Franchise Tax
- Corporate Net Income Tax
- Bank Shares Tax
- Title Insurance & Trust Company Shares Tax
- Insurance Premium Tax (excluding surplus lines, unauthorized, domestic/foreign marine)
- Mutual Thrift Tax
- Malt Beverage Tax
- Retaliatory Fees under section 212 of the Insurance Company Law of 1921

Why should your business give?

Your business will receive tax credits equal to 75% of its contribution up to a maximum of \$750,000 per taxable year. Funding can be



increased to 90% of the contribution, if business agrees to provide same amount for two consecutive tax years.

How do businesses apply?

Pennsylvania businesses can apply for EITC credits through the PA Department of Community & Economic Development's electronic single application system at DCED.pa.gov.

The Business Application Guide explains the process of applying. Tax credit applications will be processed on a first-come, first-served basis by day submitted. All applications received on a specific day will be processed on a random basis before moving on to the next day's applications. Applications will be approved until the amount of available tax credits is exhausted.

APPLICATION TIMELINE

May 15 to June 30: Business applicants who have fulfilled their two-year commitment and wish to reapply in FY 25/26 to renew their two-year commitment. Also, businesses who are in the middle of their two-year commitment.

July 1: All other businesses including initial applicants and those applicants wishing to submit an additional application on top of their previously submitted 2-year commitment.

For more information, please contact Bridget Beck at 717.298.2205 or bbeck@mshersheyfoundation.org.

MUSEUM EXPERIENCE AT THE HERSHEY STORY



Moms are FREE on Mother's Day Weekend!
Saturday, May 9 & Sunday, May 10
from 9 a.m. - 5 p.m.



Dads are FREE on Father's Day!
Sunday, June 21 from 9 a.m. - 5 p.m.